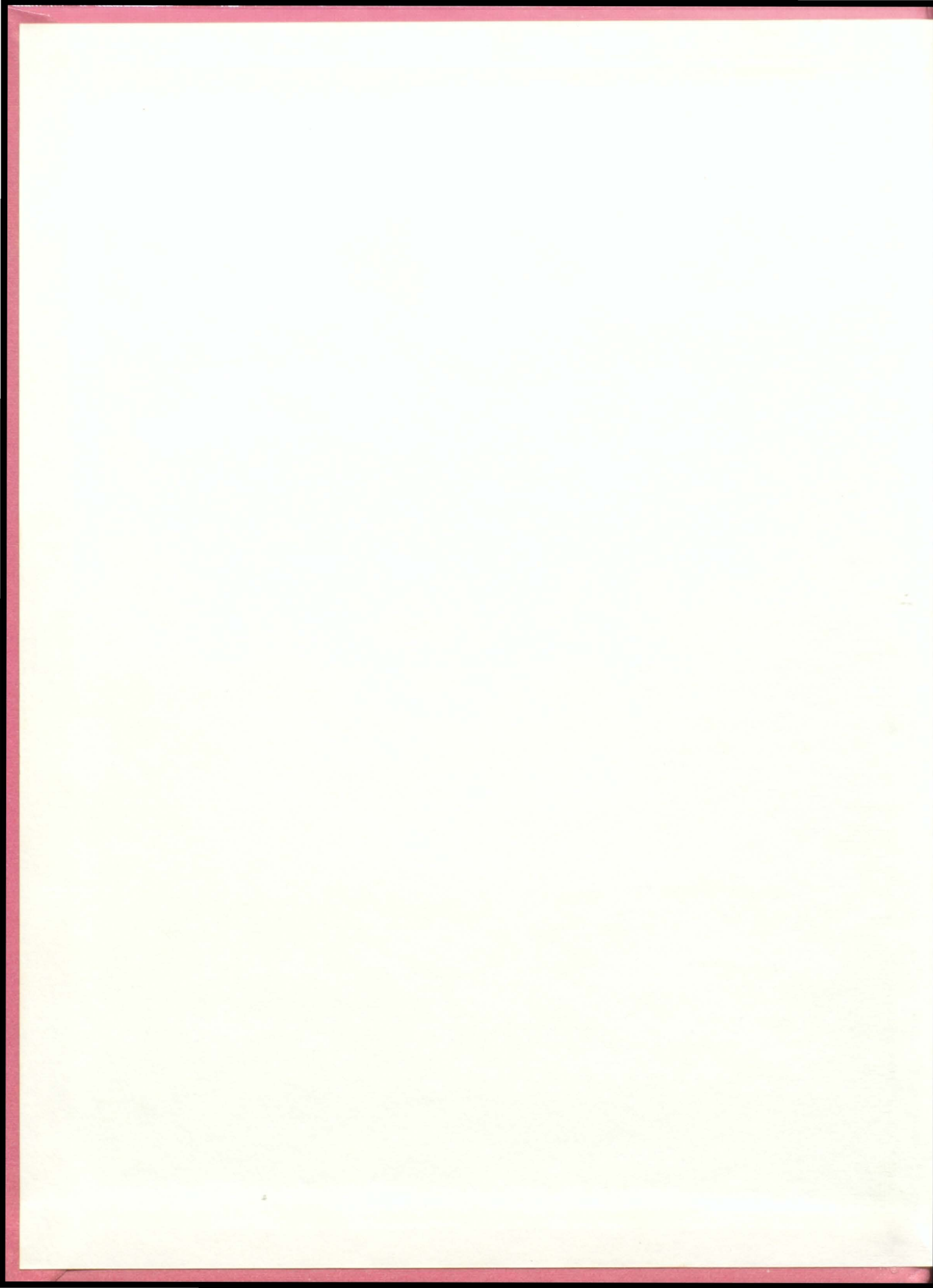
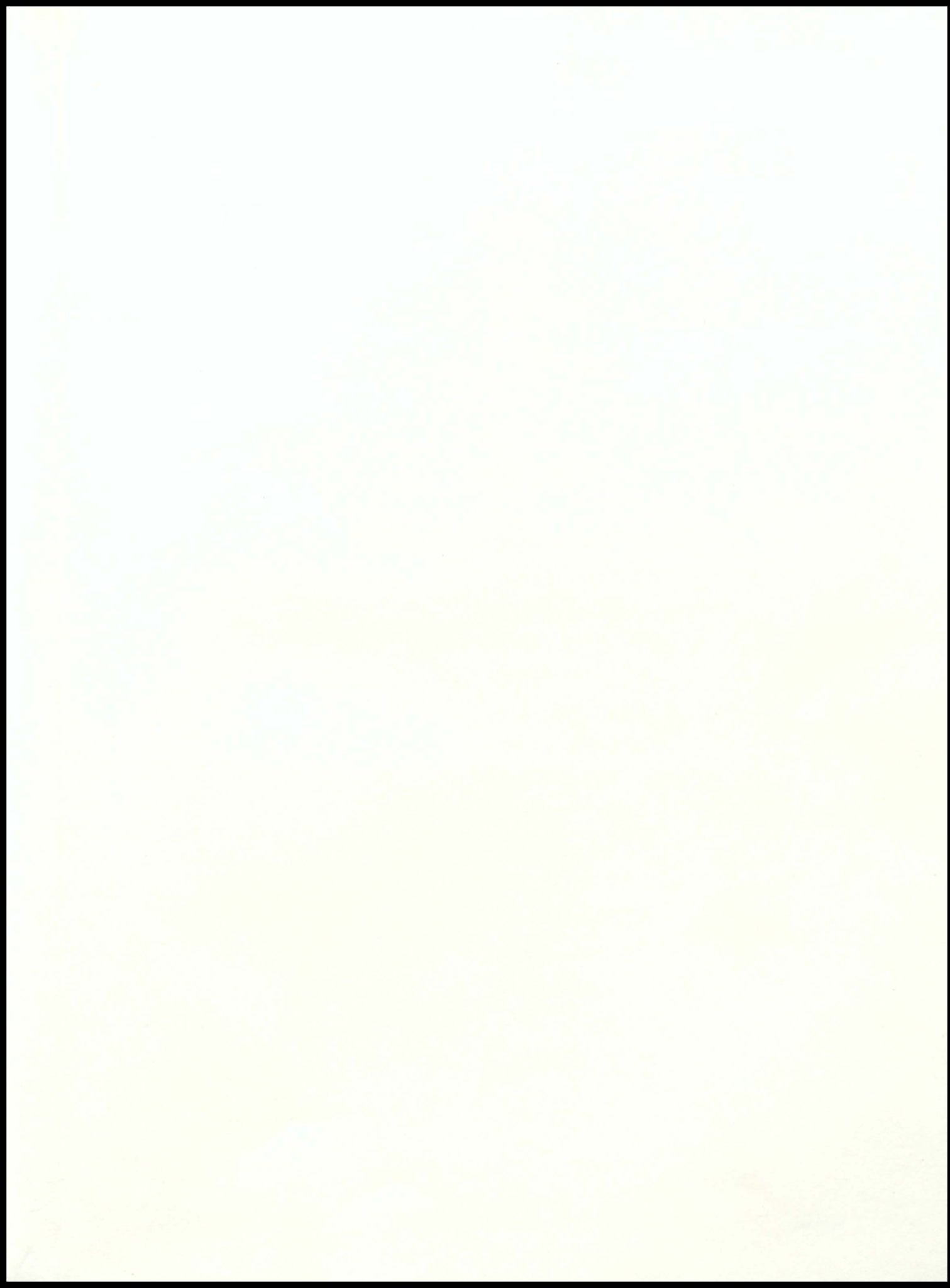
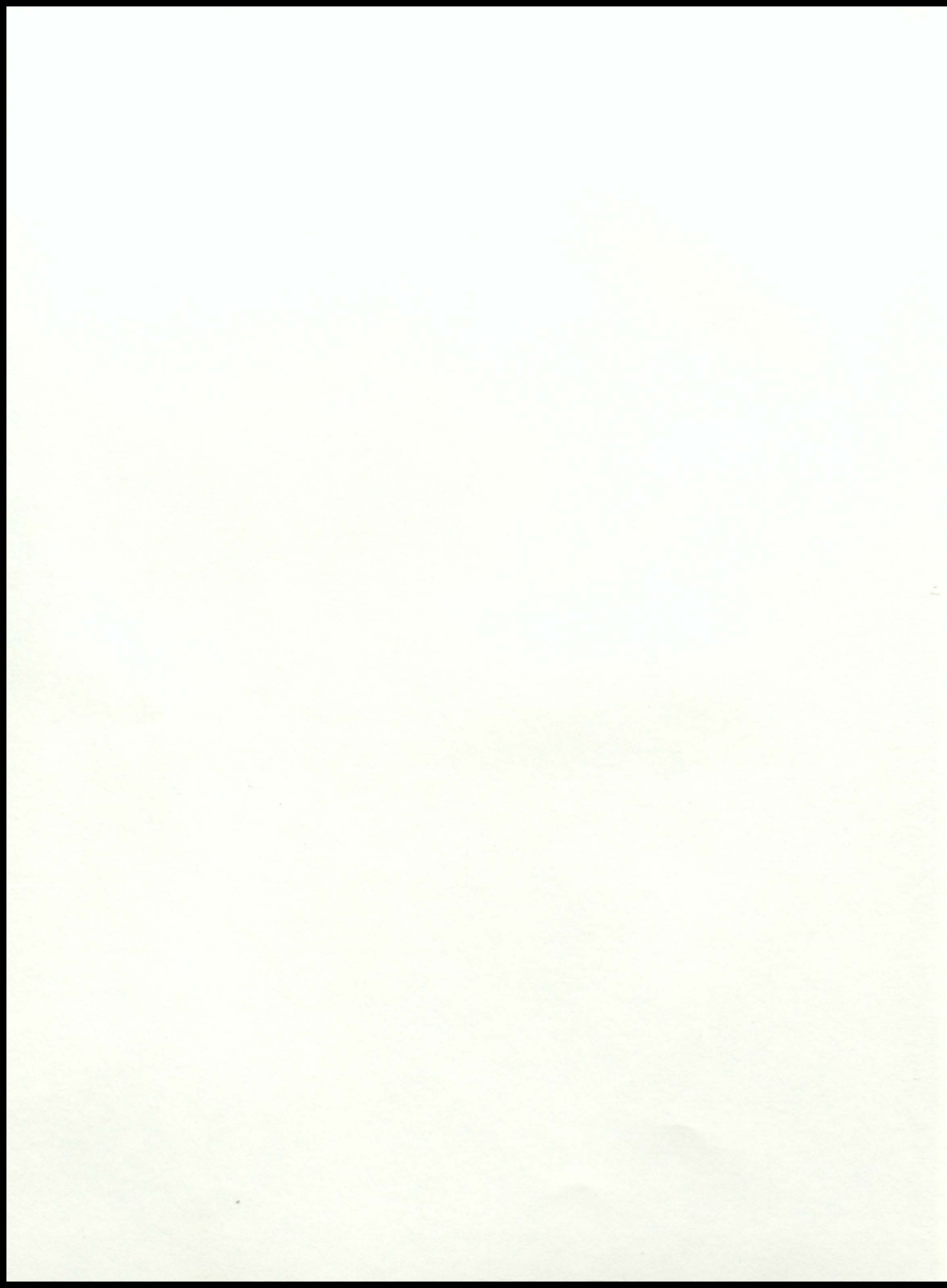


DEFINE
'89

C G
R W R
A I E
Z L A T
Y D
U O D EAGLES
N C U
F O T R A
O O G
R L E
G E T T O U S
A B V E
E







EAGLE '89

THE EAGLE EXPERIENCE

IT TAKES ALL KINDS

EADS HIGH SCHOOL EADS, COLORADO
VOLUME # 44

STAFF

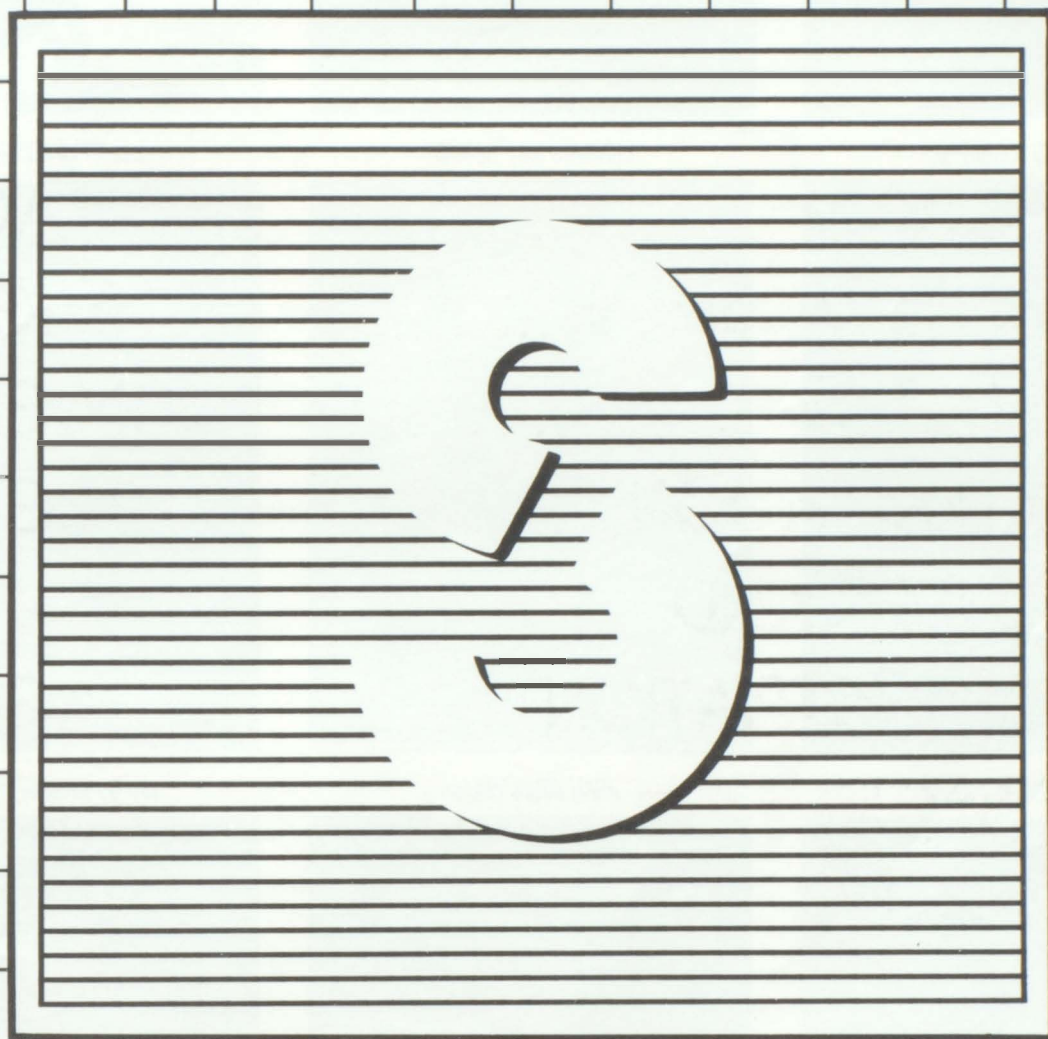
EDITOR - Lannette Barlow
Terry Arnold
Danelle Beauvais
Dani Beauvais
Nikki Hopkins
J.D. Johnson
Meg Kreutzer
Jami Liebl
Angie Offill
Joanie Rehm
Jamie Salisbury
Heath Spady
Chris Stowell
Cari Wroblewski

SPONSOR - Miss Gray

TABLE OF CONTENTS

SENIORS	PAGE 3
UNDERCLASSMEN	PAGE 15
ATHLETICS	PAGE 23
ORGANIZATIONS	PAGE 45
FACULTY AND ADMINISTRATION	PAGE 59
ELEMENTARY	PAGE 63
ADVERTISING	PAGE 75

Seniors

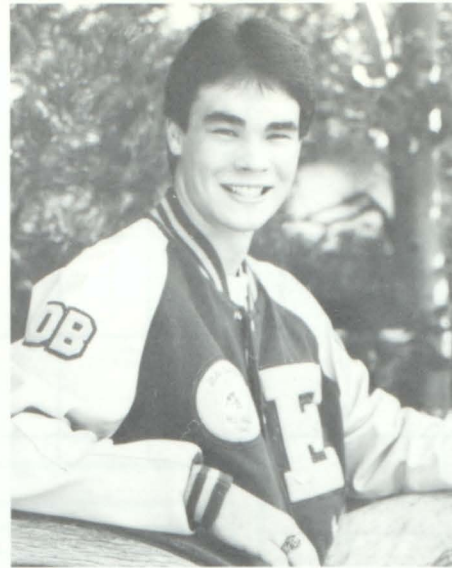




Terry Ray Arnold, Jr.



Lonnette Kay Borlow



Daniel Lewis Beauvois



Sharon Lorraine Crow



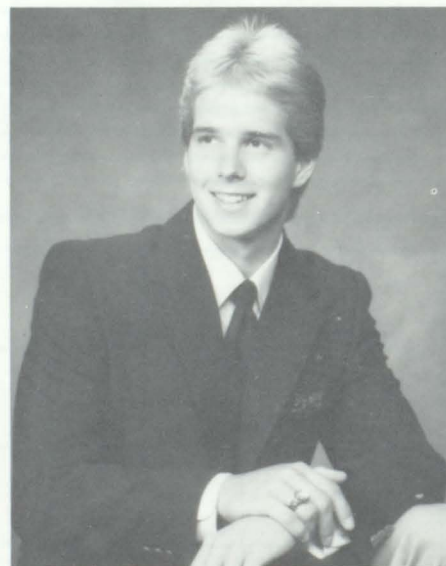
Anno Moya Driskell



Jeffrey Charles Engelhardt



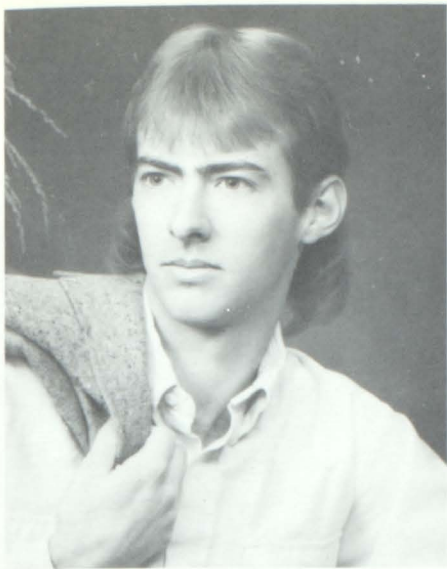
Showno Michelle Graham -
4 Seniors



Michael John Hines



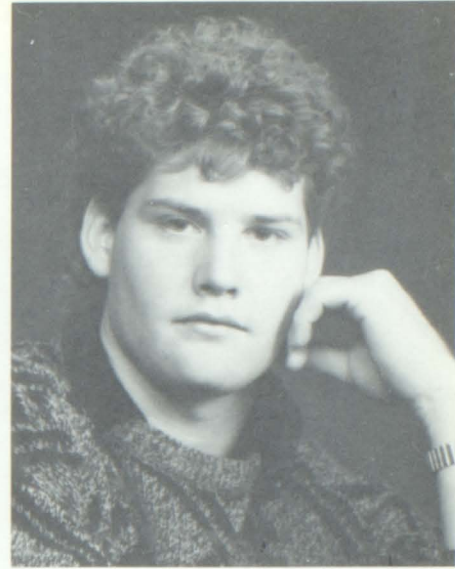
Polly Anno Howe



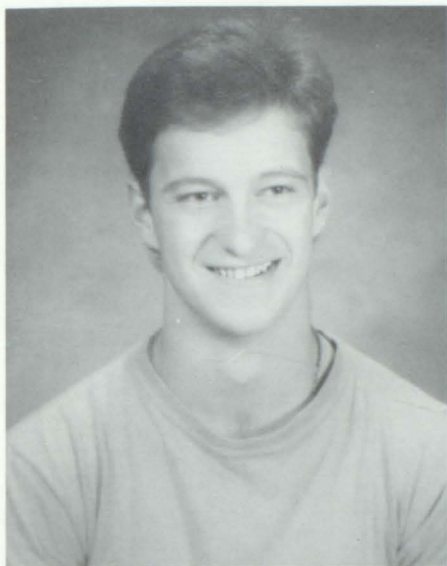
Neil Alan Koch



Melissa Genevieve Krei



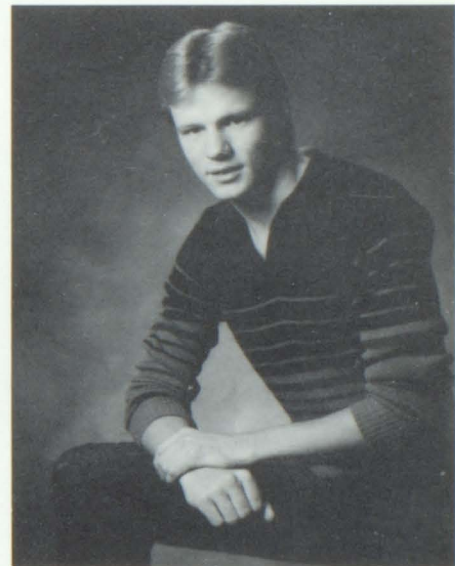
Arthur Garnet Lane



Shane Allen Lessenden



Jomi Yvette Liebl



Rodney Gene McDaniel



Shelly Renee Montroyo



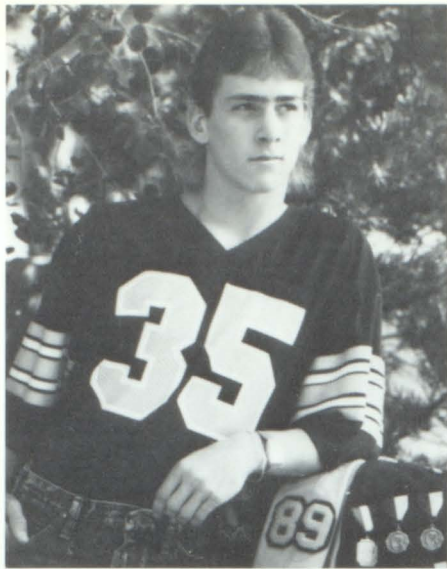
Angelo Marie Offill



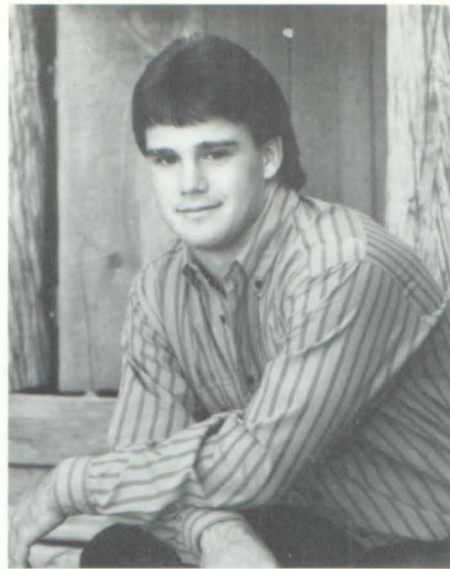
Wendy Sue Priddy
Seniors 5



Jennifer Leo Rittgers



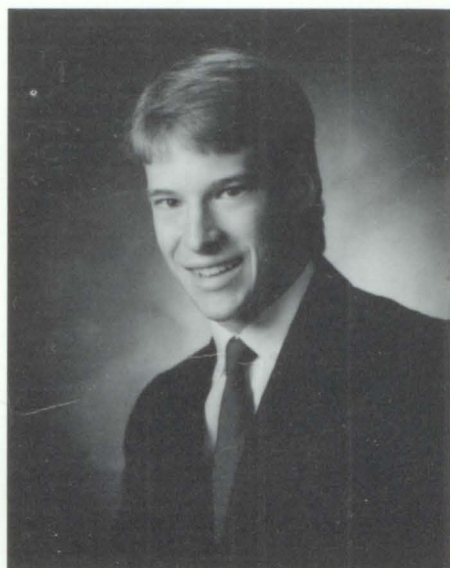
Heath Lee Spady



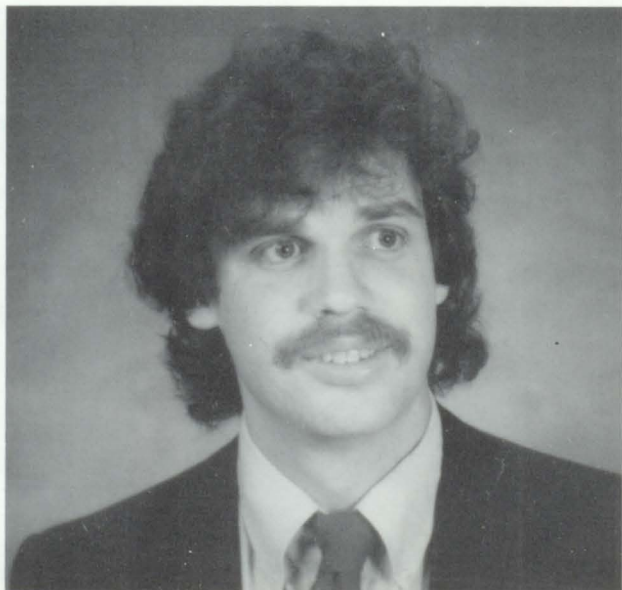
Stacy Jon Uhland



Lance Duane Wall



Jeffrey Allan Woelk



SPONSOR - MR. SEAY

SENIOR FAVORITES



Most Likely to Succeed
Jennifer Rittgers - Jeff Woelk



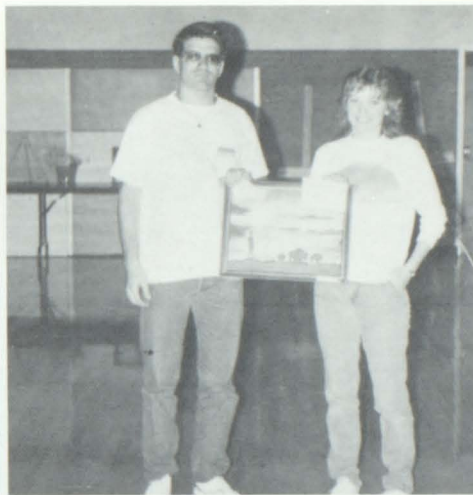
Most Comical
Melissa Krei - Heath Spady



Most Outgoing
Jomi Liebl - Stacy Uhland



Most Athletic
Mike Hines - Shelly Montoyo



Most Creative/Artistic
Jeff Engelhardt - Wendy Priddy



Best Dressed
Sharon Crow - Jeff Woelk



Shyest
Neil Koch - Wendy Priddy



CLASS
OF
1989
exhibiting
rare behavior!!!!

AS THEY WERE



Jennifer Rittgers - Volleyball 1, 2, 3, 4, Basketball 1, 2, Track 2, 3, Pep Club 1, 2, 3, Bond 1, 2, E-Club 2, 3, 4, VP 4, FBLA 3, 4, STUCO 3, Class VP 3, Knowledge Bowl 2, 3, 4,



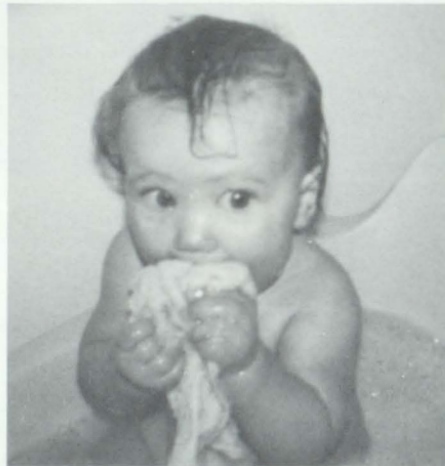
Lance Wall - Football 1, 2, 3, 4, Wrestling 1, 2, 3, 4, Track 1, Rodeo 1, 2, 3, 4, E-Club 1, 2, 3, 4, FBLA 2, 3, 4, Journalism 3, Who's Who Among American High School Students 3, Teachers Aide 2, 4



Shelly Montoya - Volleyball 1, 2, 3, 4, Basketball 1, 2, 3, 4, Track 1, 2, 3, Pep Club 1, 2, 3, 4, STUCO 1, 2, 3, 4, Bond 1, 2, 3, E-Club 1, 2, 3, 4, Chorus 1, 2, FBLA 2, 3, 4, SADD 4, Cheerleader 2, Knowledge Bowl, 3, 4, Homecoming candidate 4, Who's Who Among American High School Students 3, 4, Class President 4, Class VP 2, Class reporter 1.



Michael Hines - Football 1, 2, 3, 4, Basketball 1, 2, 3, 4, Baseball 1, 2, 3, 4, Track 1, E-Club 1, 2, 3, 4, FBLA 2, 3, Class VP 4, Homecoming King 4,



Wendy Priddy - Volleyball 1, Art Awards 2, Pep Club 3, FBLA 2, 3, 4, Knowledge Bowl 3, 4, National Honor Society 4, Who's Who Among American High School Students 3, 4,



Melissa Krei - Volleyball 1, 2, 3, 4, Basketball 1, Track 1, 2, 3, Pep Club 1, 2, 3, 4, Bond 1, E-Club 1, 2, 3, 4, Stuco rep. 3.

... AND WHAT THEY'VE DONE!



Jeff Engelhardt - Football 1, 2, 3, 4, Wrestling 1, 2, 3, 4, Track 1, 2, 3, E-Club 1, January Citizen of the Month 3



Showno Graham - Volleyball 1, Swim team 1, Citizen of the Month 4, Jr. Sr. Play 4, Struco 1, S.T.A.N.D. Pres. 4.



Neil Koch - Football 2, Basketball 1, Little Britches Rodeo 1



Rodney McDaniel - Football 1, Wrestling 1, 2, 3, E-Club 1, 2, 3, 4, Pep Club 4.



Anno Driskell - Teachers Aide 1, Pep Club 1, 2, 3, 4, Arr 1, 2, 3, 4



Shone Lessenden - Basketball 1, 2, 3, 4, Track 1, E-Club 3, 4

Polly Howe - Volleyball 1, Basketball 1, 3, 4, Track 1, mgr. 2, Pep Club 1, 2, 3, 4, E-Club 1, 2, 3, 4, STUCO 2, 3, 4, FBIA 1, 2, 3, 4, SADD 4, Cheerleader 1, Citizen of the Month 3, Jr. Sr. Play 3, 4, STUCO VP 3, STUCO Pres. 4, FBIA Sec. 4, Who's Who Among High School Students 3.

Jeff Woelk - Football 1, 2, 3, 4, Basketball 1, 2, 3, 4, Track 1, Baseball 2, 3, 4, Bond 1, 2, Knowledge Bowl, 1, 2, E-Club 3, 4, FBIA 2, 3, 4, National Honor Society 3, 4, STUCO 2, 3, 4, Class President 1, 2, NHS President 3, 4, FBIA President 4, Citizen of the Month 1, Jr. Sr. Play 4.



MORE PROFILES



Stacy Uhland - Football 1, 2, 3, 4, Wrestling 1, 2, 3, 4, Track, 1, Baseball 1, 2, 3, 4 E-Club 1, 2, 3, 4 E-Club Pres. 4, EHS Outstanding Wrestler, 2, 3, Jr. Sr. Play, 4, Chorus group "High Voltage", 2



Angie Offill - Pep Club 1, 2, 3, 4, FBLA, 2, 3, 4, Youth group 1, National Honor Society 3, 4, Srucio 3, Cheerleader 1, Who's Who Among American High School Students 3, 4, Teachers Aide 1, Jr. Sr. Play 4, Class reporter 1, 4, NHS sec. treas. 4, Editor school newspaper 4, Volleyball mgr. 4



Lonnerre Borlow - Volleyball 1, Teachers Aide 1, 3, Pep Club 3, 4, Journalism/ Yearbook 3, 4, Jr. Sr. Play, 3, 4, S.T.A.N.D. 4, Class secretary 4, Yearbook Editor 4, E-Club 4, Track mgr. 3, 4, Cheerleader 4.



Heath Spady - Football 1, 2, 3, 4, Basketball 1, 2, 3, Track 1, 2, 3, 4, Baseball 2, E-Club 4, Pep Club 4, Journalism/Yearbook 3, 4, Jr. Sr. Play 4, Srucio Rep. 4.



Joimi Liebl - Volleyball 1, 2, 3, Basketball 1, 2, Track 1, Pep Club 1, 2, 3, 4, Band 1, 2, E-Club 1, 2, 3, 4, FBLA 3, 4, S.T.A.N.D. 4, Jr. Sr. Play 3, 4, Cheerleader 4.



Arrie Lone - Football 1, 2, 3, 4, Basketball 1, 2, Track 1, 2, 3, 4, E-Club 1, 2, 3, 4, Srucio Rep. 1, Class reporter 3, Pep Club 4, Reporter 4, Homecoming Attendant 4.

Doni Beauvais - Football 2, 3, 4, Wrestling 2, 3, 4, Track 3, 4, E-Club 3, 4, Srucio Rep. 4, Pep Club 4, High Voltage Chorus group 3, Homecoming Attendant 4.

Sharon Crow - Volleyball 1, Basketball 1, 2, 3, 4, Pep Club 1, 2, 3, 4, Band 1, FBLA 2, 3, 4, E-Club 2, 3, 4, STUCO 3, Youth Group 1, 3, 4, Teachers Aide 1, 3, 4, Jr. Sr. Play 3, 4, Cheerleader 2, 4, Volleyball mgr. 3, Track mgr. 1, Class secretary 1, 2, Class President 3, Class reporter 4, Co Editor Journalism 4.

Terry Arnold - Football 1, 2, 3, 4, Basketball 1, 2, 3, Baseball 1, 2, 3, 4, Track 1, E-Club 1, 2, 3, 4, Pep Club 4.

CLASS OF '89'S

TRIP TO TEXAS



Polly, Ms. Groy, and Angie enjoying Six Flags.



Stacy and Arrie have a Showdown. 1-2-3 DRAW!



Polly, Arrie, Mike and Jomi are WET 'N WILD!!!!!!!!!!!!



Jeff sleeping soundly after a long, hard night.



MELISSA
ATE IT!!!!!!



Heath tells us how it is - again and again . .



Friends are friends forever. Mike, Stacy, Arrie, and Shone.



Lonnerre and Doni telling Terry to stop blowing bubbles.

CLASS OF 1989



Front - Anno Driskell, Shawna Graham, Jami Liebl, Lonnette Barlow, Polly Howe, Sharon Crow, Angie Offill, Shelly Montoya, Wendy Priddy, Melissa Krei, and Jennifer Rittgers. Back - Rodney McDaniel, Dani Beauvois, Heath Spady, Neil Koch, Arrie Lone, Mike Hines, Shane Lessenden, Lance Wall, Jeff Woelk, Jeff Engelhardt, Terry Arnold, and Stacy Uhland.

SALUTATORIAN



JENNIFER RITTGERS

VALEDICTORIAN



JEFFREY WOELK

CLASS PRESIDENT



SHELLY MONTOYA

Class of 1989

*Baccalaureate Service
and
High School Commencement*

Saturday, May 27, 1989
2:00 P.M.
High School Auditorium



EADS HIGH SCHOOL
Eads, Colorado

CLASS SPONSOR
Robert Seay

CLASS FLOWER
Red Rose

CLASS COLORS
Red and Black

CLASS SONG
"Friends"

CLASS MOTTO

We are the future, looking out on the past.
We are the present, making old things last.
We are Tomorrow, thinking of yesterday.
We are today, doing things our own way!

CONGRATULATIONS
CLASS
OF 1989
WISHING
YOU
CONTINUED
SUCCESS!!

Faculty

Max E. Bridgeman, Superintendent
Gail Crawford
Jacob Diel
Lisa Gray

Joe Harbert
Doris Lessenden
Gary Monter

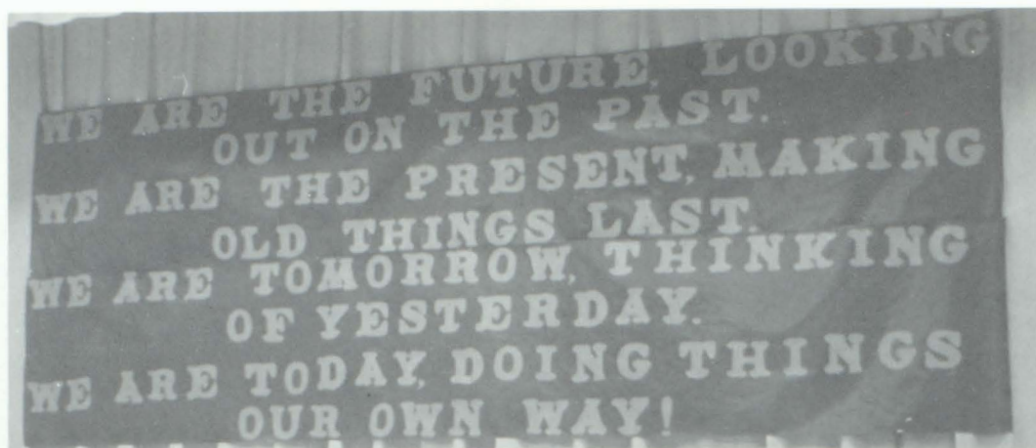
Patti Pearl
Loraine Saffer
Robert Seay

Reanee Wall
William Woelk
Robert Woods

Board of Education

Michael Reystead, President
Kirk Barlow, Vice President
Betty Crow, Secretary
LaVerle Kelley, Treasurer
John Stephenson, Director
Louis James, Jr., Director
James Liebl, Director

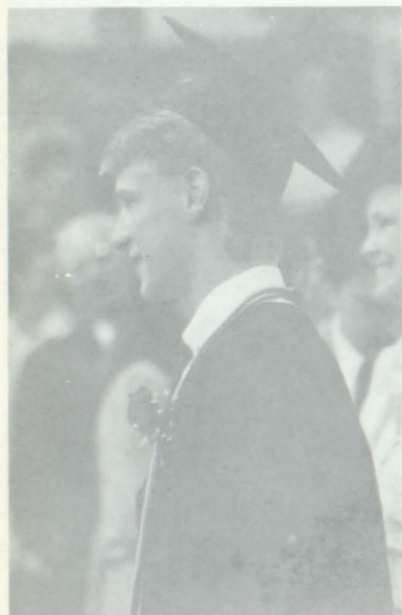
LOOKING TOWARD THE FUTURE



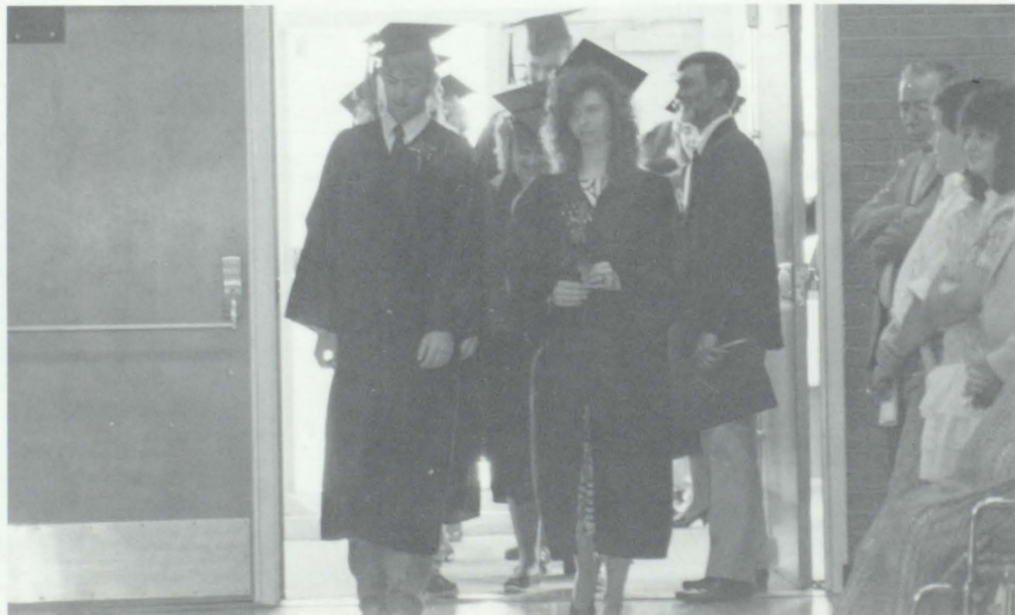
Jeff, Stacy, and Doni take a last moment to reflect on their high school years.



Angie takes a solemn walk toward her future.

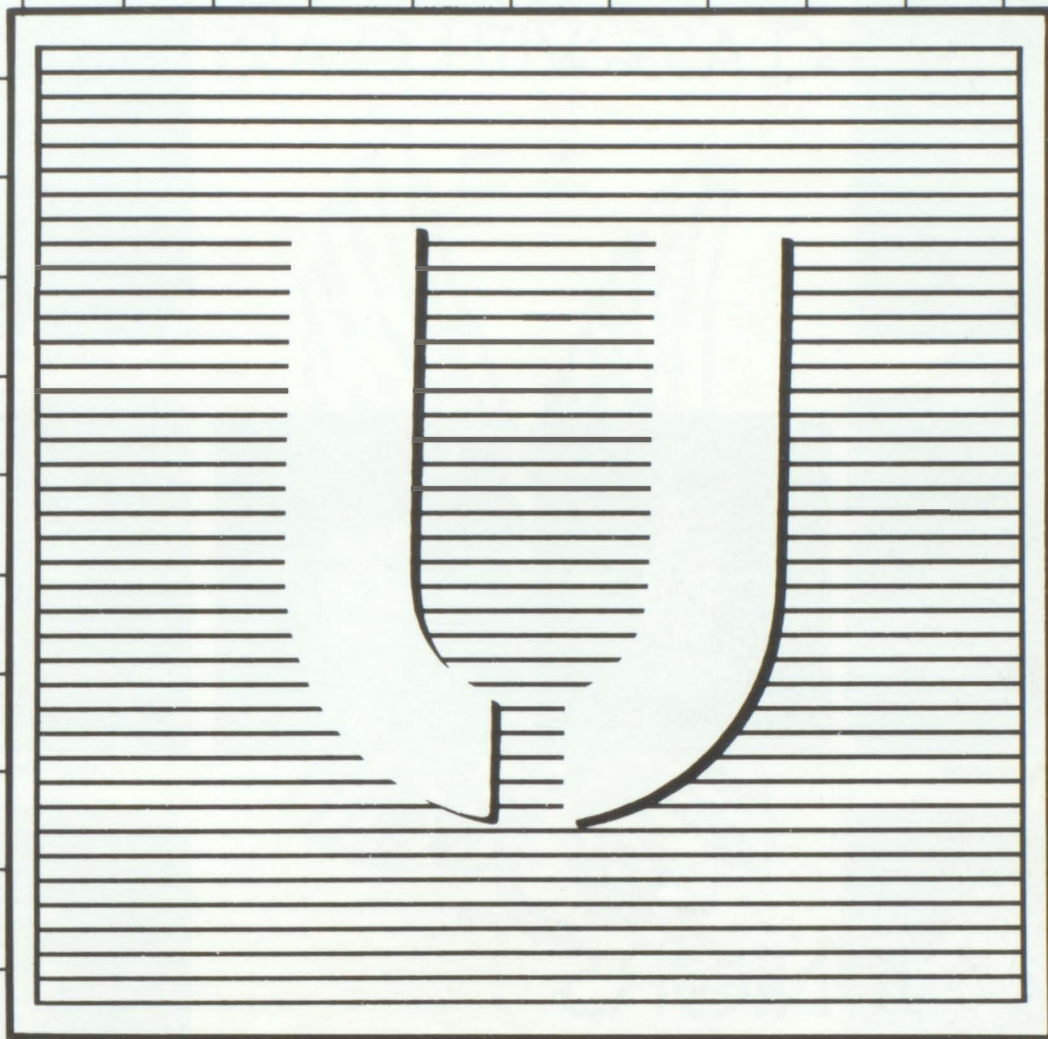


Jeff's anticipating the future.



Polly and Neil prepare to make their first steps in the march. Good thing they practiced so much!!

Underclassmen





Missy Borlow



Clint Beon



Shelly Crawford



Dione H. Crow



Nikki Hopkins

CLASS WITH CLASS

1987 - 1988

1988 - 1989



Arran Hope



Billy Koehler



Neil Lone



Duff Liebl



Amy Morgan

JUNIORS



Stacey Reystred



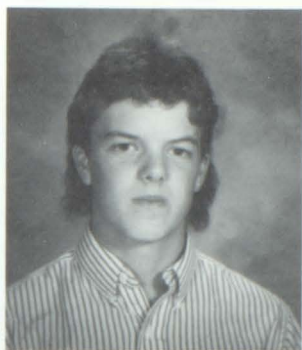
Chrissy Pittman



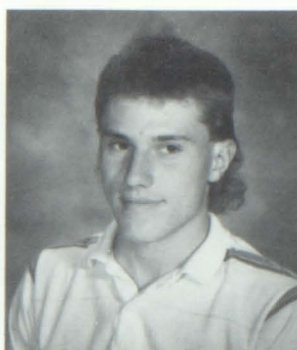
Jimmie Patterson



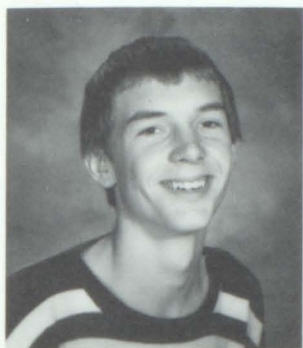
Sam Nelson



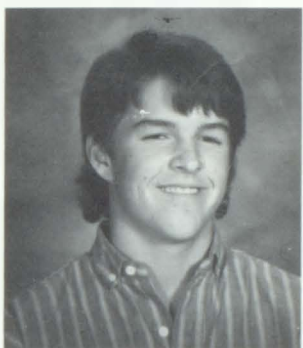
Sean Wyatt



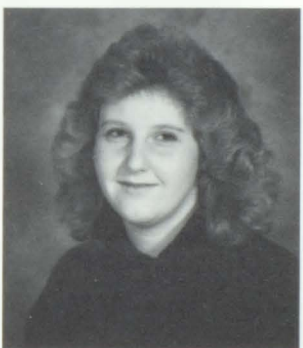
Joe Wroblewski



Oscar Ridgeway



Brett Rusher



Wando Seibel



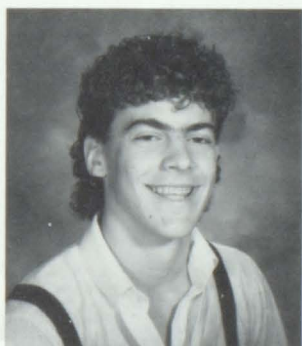
Jooni Weeks



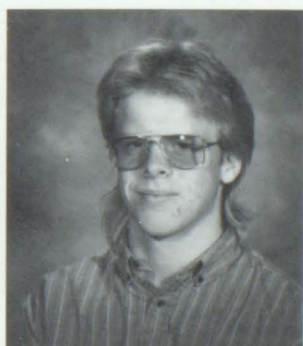
Roy Taylor



Tom Swopes



Mark Stephenson



Chris Stowell

SOPHOMORES

Jon Barlow
Brody Boxter
Danelle
Beauvois
Shannon
Christie



Scotty Engelhardt



Stephanie Gifford



Wendy Fadness



Kevin Hope

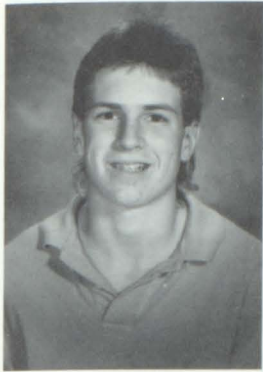
(Middle) Cori is
taking a
break

The future football
team of
E.H.S.!!!

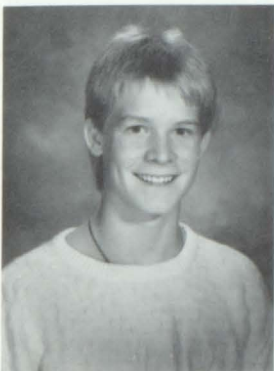


St. Joseph's
School

CLASS OF 1991



J.D. Johnson
Meg Kreuzer
Lance Lorrew
Zane Liebl



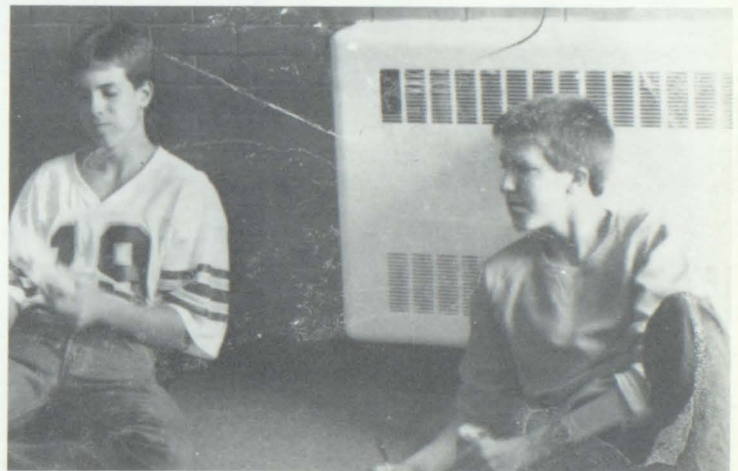
Trace Musgrove



Top - left
Joanie R. and
Wendy F. doing
their thing.

Top - Right
Meg, wide owoke
and doing a lot
of thinking.

Right -
J.D. and Zane at
their favorite
class - "pop"
class!



Mark Nelson



Joanie Rehm



Jamie Salisbury



Peggy Weber



Eric Weisdorfer



Cori Wroblewski
Sophomores 19

FRESHMAN

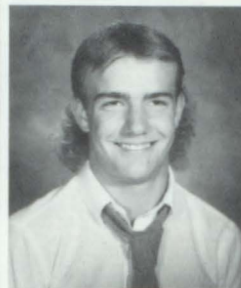
Shannon Borlow
Amy Bliss



Donny Brown
Sonny Emmert
Tyler Frazee



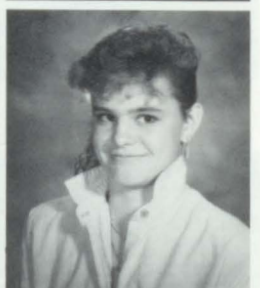
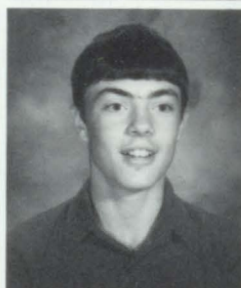
Hearther
Frederick
Kim Jopher
Paul Kelley
Scott Loney



Travis
Lessenden
Amber Liebl
Chris Lindholm
Cindy Offill



Becky Rittgers
Heath Robertson
Kelli Rouse



Cimber Taylor
Matt Trosper



CLASS OF '92



Just one of the guys

Cindy
Offill

Notre
Dame

Travis L. Jessenden
Keith Robertson
Acon Laney

Keith & Rose
Paul
Kelley

Kimberley
Gaphet



Future Leaders of America!!!

Amber
Stell

Sonny
Emmert

Tyler
Fraser

Becky
Rittgers

Shannon
Barlow

Danny Brown

Heather
Frederick



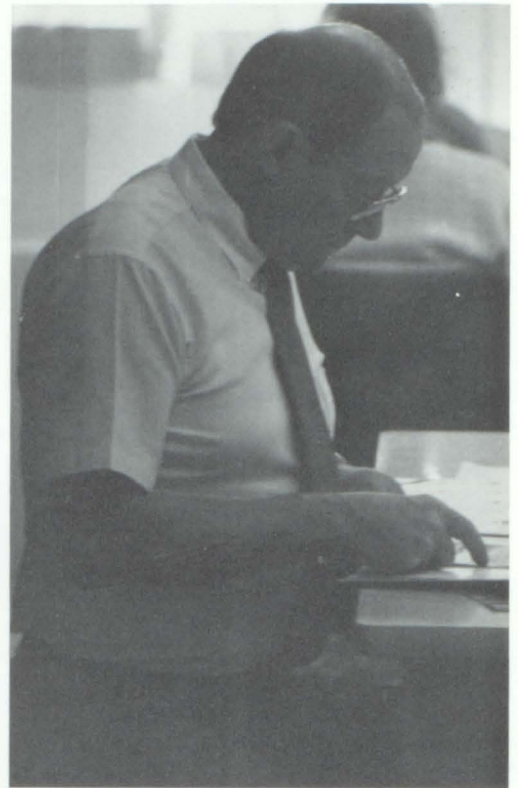
Awaiting puberty!

STUDENT LIFE

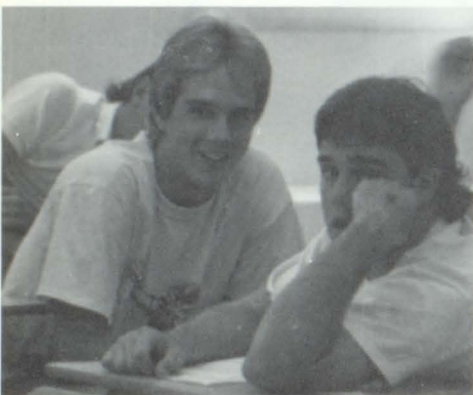
LIFE AT E.H.S.



"You're all I think about," says Amy M. about Arrie L.



Mr. Woelk or his best



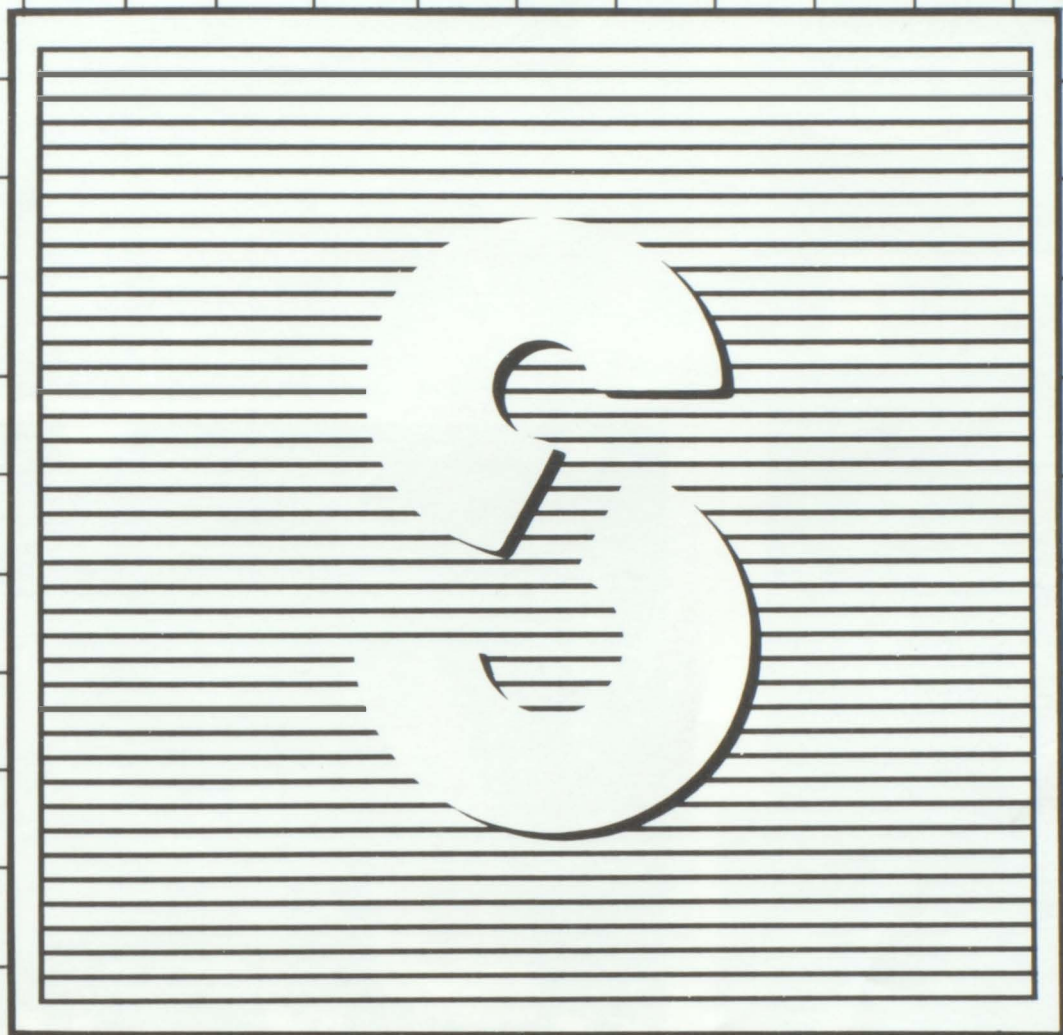
Mike and Stocy look guilty to me!



Roh, Roh, Roh



Sports



HOMECOMING GAME



Jeff Woelk, Artie Lone, and Terry Arnold.



Top: Amy Morgan, Sharon Crow, Polly Howe, Shelly Montoya, Meg Kreutzer. Bottom: Paul Kelley, Tommy Swopes, Artie Lone, Heather Frederick, Mike Hines, Doni Beauvais, Jamie Salisbury, Tyrell Hollen, Bylie Joe Beeson.



Mike gives Polly the royal smooch!!!



Seniors - Mike H., Sharon C., Artie L., Shelly M., Dani B., and Polly H.

EADS Eagle,
Christy Pittman and
Wando Siebel.



SPIRIT WEEK



Now we know who the real nerds are!!!



Cari, get the pencil in the bottle!



Show those sexy legs Dani.



Looks like Duff found her man first!



Our Freshman Football players: Amy Bliss, Cindy Offill, and Amber Liebl.



Oh Lonce, you're so rough!



Our hula girls - Polly Howe and Lannette Barlow.

PEP RALLY



Do you trust me now?



Senior skit - Nice boots Vonno Block (o.k.a. Mike Hines!)



Junior skit - Look at those For Boys!!!



Sophomore skit - Can't you hit your mouth?!?!?



Freshman skit - Nice, white legs!!!!

HOMECOMING DANCE - 1988



Back: Tom Swopes, Arrie Lone, Mike Hines, Doni Beauvois, Jamie Salisbury, Paul Kelley. Front: Amy Morgan, Shelly Montoya, Polly Howe, Sharon Crow, Meg Kreutzer, Heather Frederick.

Fun For All



Kelli and Nikki - Best Buddies forever.

This year's theme for Homecoming was "Songs". Homecoming fell on Fair Week so we had Spirit Week Sept. 1 - 10. The Freshman dress-up days were as follows: Baby Day, Sesame Street Day, Sports Reversal Day, and Sr. Point Day. For the rest of the students it was Punk Rock Day, Nerd Day, Hawaiian Day, and Tourist Day. The spirit week was a great success with everyone joining in the fun. The pep rally was Sept. 6th and we had lots of laughs or the skirts. The Juniors won "Class with Class" for the second time in a row. The Homecoming game was Sept. 9, and we beat McClave 44-22. The Homecoming parade was combined with the Fair parade on Sept. 10th. The Freshmen made the only floor and won 1st place followed by the Juniors, Seniors, and Sophomores. The dance was held a week later on Sept. 16 which ended the festivities.



E.H.S. students join together at the Homecoming Dance of 1988.



FOOTBALL 1988



Left to right - Top to Bottom: Asst. Coach Lorry Gifford, Billy Koehler, Stacey Uhland, Mike Hines, Joe Wroblewski, Head Coach Gail Crawford, Jeff Engelhardt, Heath Spody, Doni Beauvais, Lance Wall, Terry Arnold, Jeff Waelk, Sam Nelson, Jimmie Patterson, Shannon Christie, Paul Kelley, Matt Trosper, J.D. Johnson, Zane Liebl, Mark Stephenson, Tom Swopes, Eric Weisdorfer, Mark Nelson, Travis Lessenden, Jamie Salisbury, Tyler Frazee, and Brady Baxter.

1988 - FOOTBALL

Eads	42	Manzanola	8
Eads	44	McClave	22
Eads	20	Swink	6
Eads	42	Chey Wells	13
Eads	20	Granado	26 O T
Eads	46	Gilpin Co	22
Eads	28	Wiley	12
Eads	44	Holly	6
Eads	20	LaVera	0
Eads	36	Aurora Christian	28
Eads	6	Granado	8

The state class A-8 man championship game proved to be one of the best state championship games ever. I was very proud of my team, especially on defense. We kept Granado from making the "big" plays and held their explosive offense to just one touchdown. Also, after the first quarter we moved the ball against Granado on offense. We did it the hard way with three yards and a cloud of dust which showed the discipline of the young men on the team.

I appreciate the effort given by the players and I had a good feeling when the team finally come together to reach the title game. I hope that each individual received something through participating on the team which will be beneficial in their future.

by Mr. Crawford



You'll be alright, Skip.



Worch the boll, Doni!



Are you rolking to me?



Purple People Eorers.



We were so close.



Someone threw a sock of porotoes on me!



The men from Eods.



They don't hit thar hard, do they?

VOLLEYBALL '1988'

VARSITY



Where's the ball?

Stacey showing her stuff.



l - r., Stephanie Gifford, Amy Morgan, Melissa Krei, Cori Wroblewski, Duff Liebl, Stacey Reysread, Meg Kreutzer, Shelly Crawford, Shelly Montoya, Joani Weeks, Jennifer Rittgers, and Coach Gary Monter. Not pictured: Diane Crow.

1989 Season Record 20-2

Eads	Opponent
15, 14, 15	Wiley
15, 15	McClave
15, 15	Berhune
15, 15	Las Animas
15, 15	Crowley Co
15, 15	Karval
15, 15	Springfield
15, 15	Cheyenne Wells
15, 15	Granada
15, 11, 15	Deertrail
15, 13, 15	(Swink) Kim
15, 15	Swink
15, 15	Manzanola
13, 15, 15	Springfield
15, 15	Kir Carson
15, 15	Hi Plains
15, 15	Holly
15, 15	(Districts) Springf
15, 15	Swink
15, 15	Crowley Co
7, 7	(Store) Lyons
9, 16, 4	Strosburg



R. - The Lady Eagles or their BEST!!!

VARSITY AND JUNIOR VARSITY



Standing - Shannon Borlow, Stephanie Gifford, Meg Kreuzer, Cori Wroblewski, Kelli Rouse,
Kneeling - Decky Rittgers, Amy Bliss, Danelle Beauvois, Gary Monter, Cindy Offill, Amber Liebl,
and Heather Frederick.



Up, Up and Away!



Where am I?



Cori, doing what she knows best!



Strep and Cori covering Shannon.

AN ATHLETIC EXPERIENCE - LADY EAGLE BASKETBALL

"THE YEAR"

COACHES' COMMENTS SEASON RECORD

The 1988-89 season started out good. Their fifth win of the season was to Fowler, the now A-I State Champions. Going into Christmas break they had a 6-0 record and were eagerly anticipating what the new year would bring.

Coming back from break, the Lady Eagles showed a lot of promise. They were right back on track with six more wins. Some very sweet wins were to Stratton, the defending State Champions, Granada, who placed third in the 1989 A-II classification, and Crowley Co.

With two-thirds of the season under their belt, the ladies were playing exciting basketball. They were ranked No. 1 in the A-I polls and had only one more real test before districts. The ladies won their next two games before a showdown against Flagler. The latter being undefeated and the ones who eventually become runner-up State Champs in this year's A-II Division. The girls fought hard and came away with a 56-49 win.

Finishing the regular season undefeated and with three more wins needed in order to advance to the state tournament the ladies knew they had a tough test in front of them.

They went on to win the first two district play-off games over Springfield and Swink. By doing so, they advanced to the Championship game against Crowley Co.

With the dream of a perfect season intact, the Lady Eagles went into this game knowing they were against a very good team. They were up after the first quarter but the game was tied at 25 in the first half. When the buzzer sounded at the end of the third quarter Eads was ahead 35-33.

Fouls were a decisive factor for the Eagles during the game. The team lost two players due to fouls shortly after the fourth quarter began. With 9 seconds left in the game, a C.C. player hit a corner jumper to put them ahead. With only a few seconds left, a hurried shot was attempted. It was a heartbreaking loss to C.C. the 1989 A-I Runner-Up Champions, with a score of 44-43.

Congratulations to all the ladies on a fine season. They showed good attitudes and worked extremely hard making it a very enjoyable year. Many thanks to all the fans for their support throughout the year.

Coach Gooden

Eads	89	Cheraw	10
Eads	55	Swink	19
Eads	72	Wiley	36
Eads	60	McClave	32
Eads	61	Fowler	46
Eads	67	Las Animas	58
Eads	69	Tribune	42
Eads	59	Stratton	46
Eads	63	Granada	45
Eads	69	Kir Carson	31
Eads	49	Crowley Co	41
Eads	73	Karval	24
Eads	74	Cheyenne Wells	44
Eads	81	Holly	28
Eads	56	Flagler	49
Eads	72	Springfield	48
Eads	63	Plainview	19
Eads	64	Holly	23

Record 18-0

Districts

Eads	57	Springfield	35
Eads	60	Swink	39
Eads	43	Crowley County	44

Record 20-1

"THE TEAM"

Front row

Coach
Lone
Gooden

Duff
Liebl

Shelly
Crawford
Stacey
Reystead
Meg
Kreutzer
Coach
Gail
Crawford



Back row:

Stephanie
Gifford

Jooni
Weeks

Shelly
Montoya

Sharon
Crow

Polly
Howe

Not
pictured: Manager
Cori
Wroblewski

LADY EAGLES IN ACTION



JV BASKETBALL

From left to right: Shannon Borlow, Heather Frederick, Amber Liebl, and not pictured; Cindy Offill.



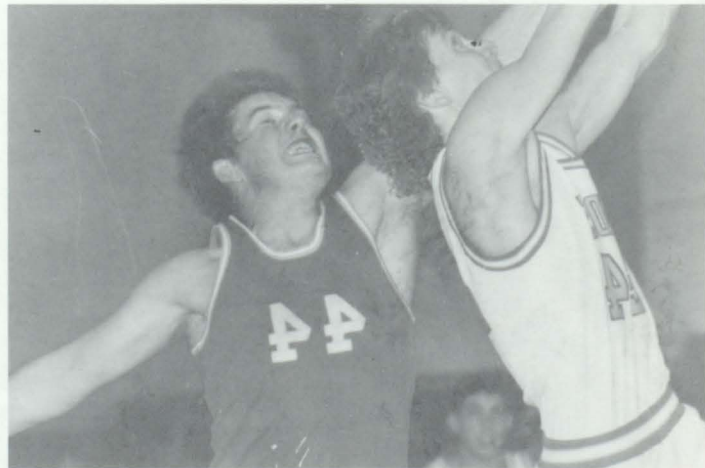
BOYS BASKETBALL



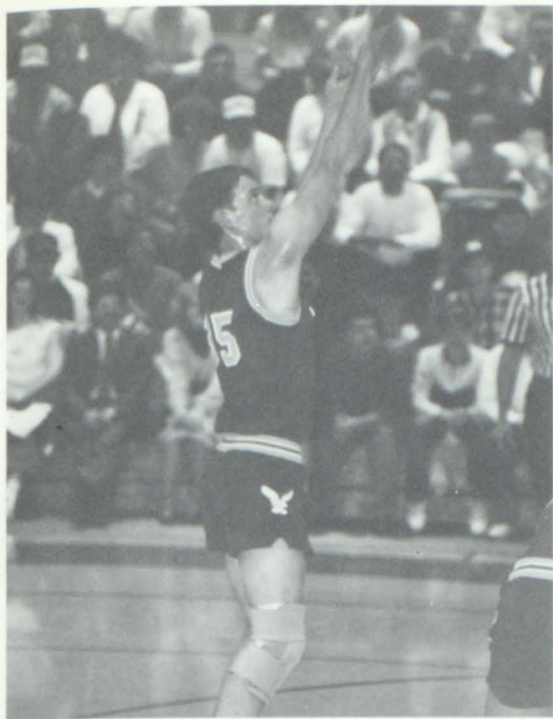
BACK - Coach Crawford, Peggy Weber (mgr), Oscar Ridgeway, J.D. Johnson, Mike Hines, Billy Koehler, Shane Lessenden, Lance Larrew, Neil Lone, and Coach Gooden. Front - Sean Wyatt, Jeff Woelk, Tyler Frazee, and Brady Boxrer.



Preparation for play.



Neil Lone gets a quick sniff of an opponents deodorant!



Shane Lessenden shoars for two.



Tommy won't let him pass.



Billy makes a bucket for two.



Tyler is keeping a pretty close guard on his man. (It helps to stick out his tongue.)



TIP TO AN EAGLE!!!!

CONGRATULATIONS EAGLES
ON A SUPER SEASON!!!!

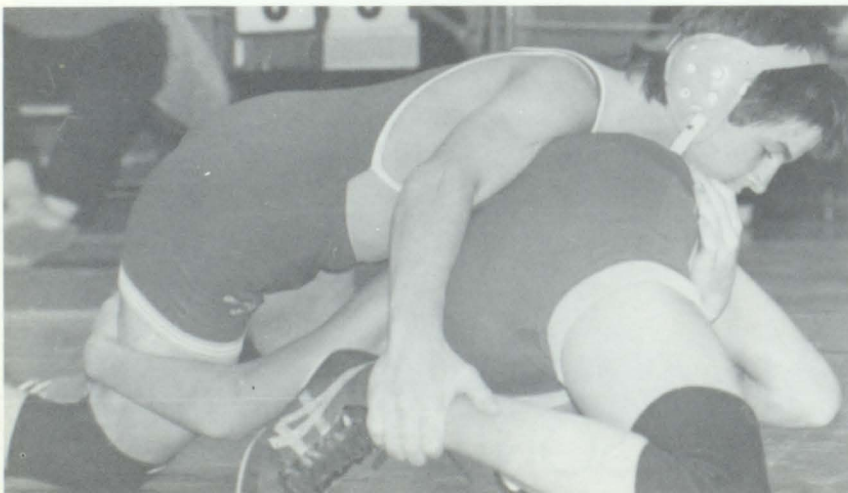
EAGLE WRESTLING



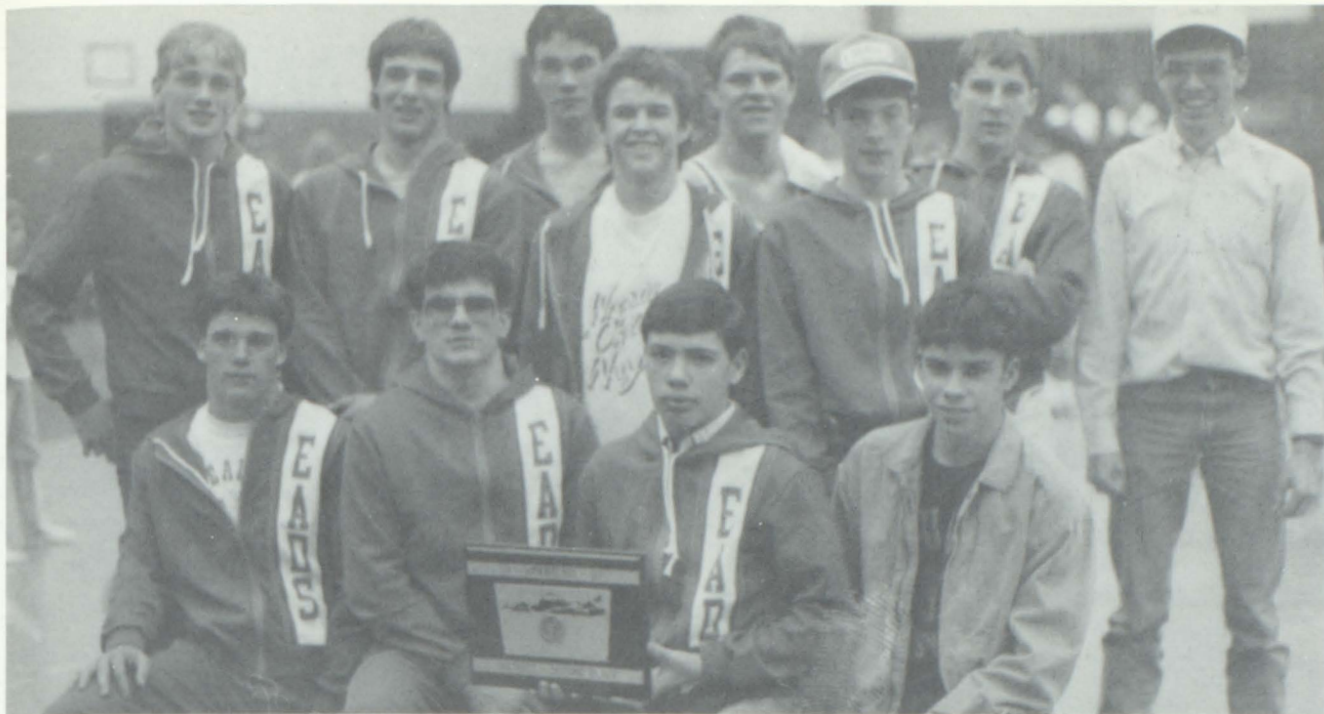
Back row, left to right - Coach Woods, Travis Lessenden, Mark Nelson, Doni Beouvois, Stacy Uhland, Jeff Engelhardt, Terry Arnold. Front - Heath Robertson, Scott Engelhardt, Chris Lindholm, Brett Rusher, and Eric Weisdorfer. Not pictured are the managers, Becky Rittgers, Amy Bliss, and Danelle Beouvois.

This season was a great one! The team ranked in the top 10 the entire year and produced three state placers. I was proud of each Eagle and of the toil, sweat, tears and sweet victories throughout the season. The seniors will indeed be missed and will be remembered for their many accomplishments.

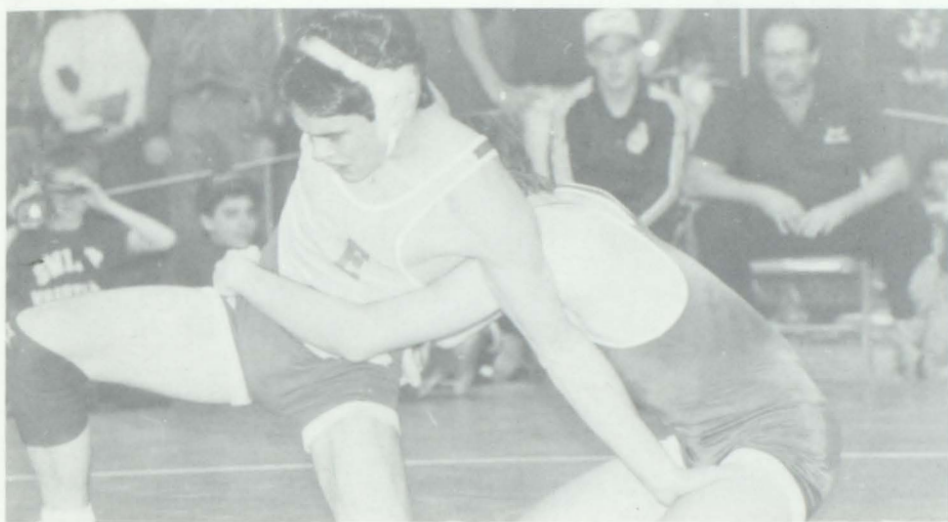
Coach Woods



Left - Brett strikes again. Top - Lance takes a breather after a tough one.



Our E.H.S. wrestlers after their second place win at Districts. Stacy, Jeff, Chris, Travis, Mark, Lance, Doni, Brett, Terry, Heath, Eric, and Scotty.

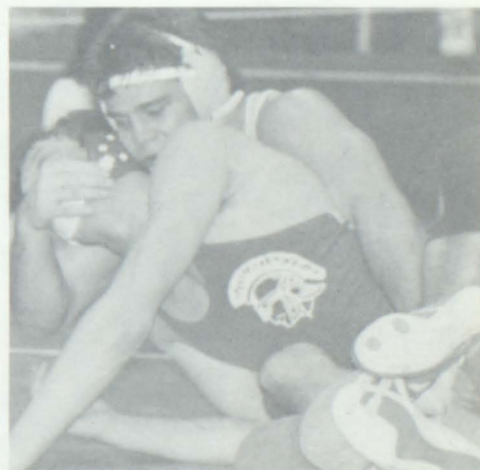


Doni working toward a pin. That's the way, Doni.



Stacy Uhland doing what he does best. Way to go, Stacy.

- #112 Heath Robertson Fr.
10 - 7
- #119 Scott Engelhardt S.
0 - 8
- #119 Eric Weisdorfer So.
25 - 6
- #125 Brett Rusher - Jr.
13 - 9
- #125 Travis Lessenden Fr
4 - 14
- #130 Chris Lindholm Fr. 2 - 16
- #135 Mark Nelson So.
8 - 17
- #140 Dani Beauvais - Sr.
11 - 8
- #145 Stacy Uhland - Sr.
24 - 2
- #152 Lance Wall - Sr.
26 - 1
- #160 Jeff Engelhardt - Sr 14 - 10
- #172 Terry Arnold - Sr.
3 - 2



GIRLS TRACK TEAM



Coach Gary Monter, Heather Frederick, Amber Liebl, Duff Liebl, and Wendy Fadness.

The track season was enjoyable for myself, and I feel also for the four individuals who participated this season. Never having to be concerned with team points, the tracksters could relax and know that risk taking in their events would not have a great effect if the risks didn't pay off. The distance crew of Heather, Amber and Wendy had a good season with numerous personal records. Duff established a winning streak in the high jump along with two state records. In addition, Duff broke the school 200 meter record and never finished below 2nd in the long jump all season, with nothing but firsts through the regular season.

Coach Monter

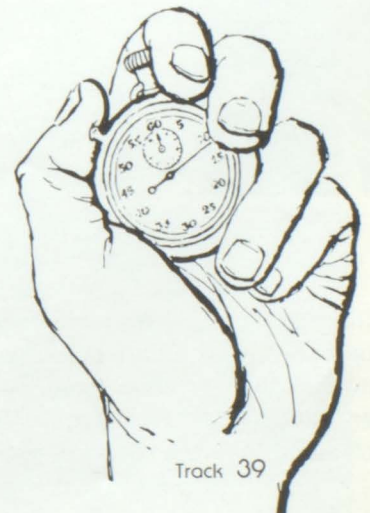
CONGRATULATIONS
ON A SUCCESSFUL
SEASON
AND BREAKING THE
OLD RECORDS!!!



BOYS TRACK TEAM



FRONT - Jamie Salisbury, Donny Brown, Chris Lindholm, Travis Lessenden, Tyler Frazee, Sonny Emmert, and Sean Wyatt. BACK - Heath Spady, Zane Liebl, Mark Stephenson, Matt Trosper, Neil Lane, Jeff Engelhardt, Chris Stowell, and Coach Woods.



EAGLE BASEBALL '89



Back - l to r. Lance Lorrew, Billy Koehler, Doni Beouvois, Mike Hines, Terry Arnold, Stacy Uhland, J.D. Johnson. Tom Swopes, Jeff Woelk, Trace Musgrave, Eric Weisdorfer, and Brady Boxter.



Eads	9	Crowley Co	8
Eads	3	Stratton	4
Eads	1	Wiley	17
Eads	1	Wiley	13
Eads	2	Chey Wells	1
Eads	10	Chey Wells	13
Eads	5	Granado	15
Eads	3	Granado	13
Eads	24	McClave	1
Eads	12	McClave	2

COACHES COMMENTS BY CRAWFORD

The 1989 baseball team recorded more home runs than any other team since I have coached the Eagles. We did have trouble getting hits with men on base and putting hits together. Although our record may not have seemed impressive, all our losses were to teams rated in the top ten in the state.



FOOTBALL CHEERLEADERS



Front row - Jomi Liebl, Sharon Crow, and Shannon Borlow. Second row - Jon Borlow, Shelly Crawford (up) and Stacey Reystead.



Performing at a Pep Assembly.



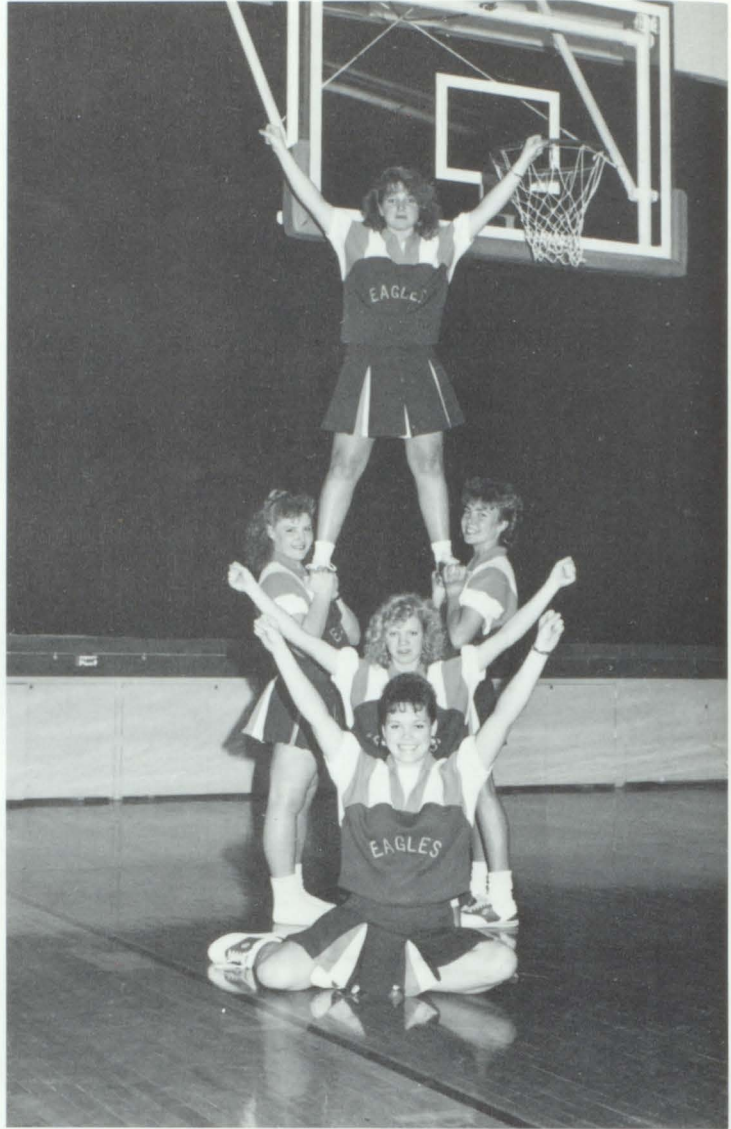
Top r. the gong worching the game. Center - Stacey and Shelly get the crowd going. Right - Performing for the Pep Club. Left - Just a friendly game of leap frog!!



WINTER SPORTS CHEERLEADERS



Top - Entertaining the Basketball crowd. Center - "Many Many". Bottom - Killer stunts strike again!!!



Jon Barlow, Shannon Barlow, Nikki Hopkins, Melissa Barlow, and Lonnerte Barlow.



PEP CLUB

SUPPORTS CHEERLEADERS



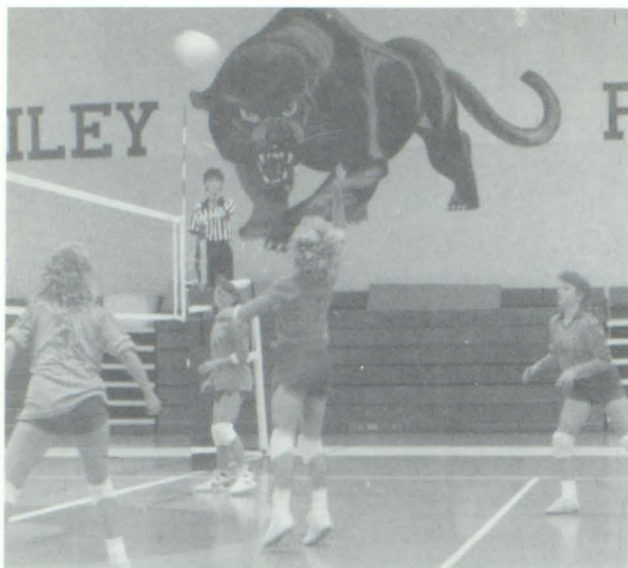
Front - Paul Kelley, Kelli Rouse, Amber Liebl, Heather Frederick, Cindy Offill, Amy Bliss, Becky Rittgers, Kim Jopher. 2 - Danelle Beauvois, Zone Liebl, Trace Musgrove, Cori Wroblewski, Strehonie Gifford, Meg Kreutzer, Joonie Rehm, Peggy Weber. 3 - Jooni Weeks, Mark Strehenson, Duff Liebl, Amy Morgan, Melissa Borlow, Wando Seibel, Brett Rusher, Neil Lone. 4- Angie Offill, Doni Beauvois, Polly Howe, Shelly Montroyo, Heath Spady, Arrie Lone, Terry Arnold, Anna Driskell. And the cheerleaders!



Pep Club gets into the spirit of things and helps the cheerleaders yell the teams on to victory. Left - Jon freezes or a football game and right - Pep Club members help urge the team to a win. Thanks to the Pepsters for all their support!



ATHLETICS AT ITS BEST



Shannon B. up for a spike.



"Here's the plan," says Mr. Gooden.



Neil Lone up for the rebound



Lance says, "This is a good place for a stick up!"



"How's the old heart Sean?"

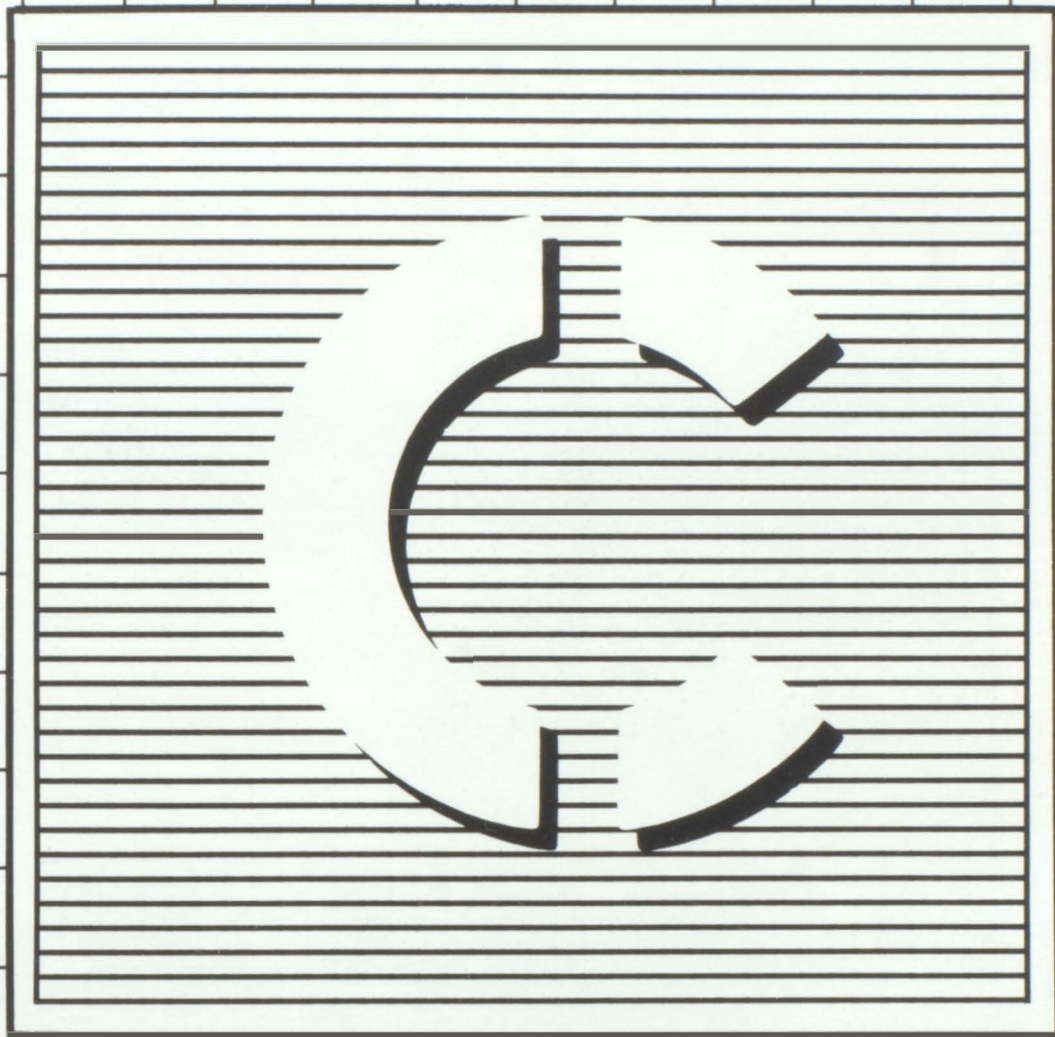


Sharon and Jomi or their best



We were thot close!!!

Clubs



GIRLS AND BOYS E CLUB



Back - Jomi Liebl, Sharon Crow, Peggy Weber, Amy Morgan, Coach Monter, Melissa Krei, Stacey Reystead, Duff Liebl, Lonnette Borlow, Jennifer Rittgers, Cori Wroblewski, Joani Weeks, Shelly Crawford, Shelly Monroya, Nikki Hopkins, Wanda Seibel, Polly Howe, Stephonie Gifford, Angie Offill, Meg Kreutzer and Melissa Borlow



Back - Scatty Engelhardt, Sam Nelson, Trace Musgrove, Tommy Swopes, Chris Stowell, Zane Liebl, Oscar Ridgeway, Neil Lone, Bill Koehler, Mark Stephenson, Mark Nelson, Sean Wyatt, Eric Weisdorfer, Brady Boxter, and Brett Rusher. Front - Rod McDaniel, Jeff Woelk, Heath Spady, Shane Lessenden, Artie Lone, Terry Arnold, Doni Beouvois, Mike Hines, Stacy Uhland, Lance Wall, and Jeff Engelhardt

CLUBS AT E.H.S.



NHS Members Front row l to r - Angie Offill, Wendy Priddy, Mark Stephenson, Jeff Woelk. Middle - Mr. Woelk, sponsor, Duff Liebl, Meg Kreutzer, Chris Stowell, Mark Nelson, Stephanie Gifford, Stacey Reystead, and Sam Nelson.

N
A
T
I
O
N
A
L

S
O
C
I
E
T
Y



S.
T.
A.
N.
D.

STAND members Front - Mark Stephenson, Stacey Reystead, Sharon Crow, Showno Graham. Wendy Priddy, Duff Liebl, Shelly Crawford, Sam Nelson, Jim Patterson, Scott Engelhardt.. Meg Kreutzer, Peg Weber, Danelle Beauvois, Jooni Weeks, Angie Offill, Polly Howe, Jomi Liebl. Chris Stowell, Amy Morgan, Missy Barlow, Dione Crow, Cindy Offill, and Heather Frederick.



F
B
L
A

FBLA Members - Front - Amy Morgan, Duff Liebl, Mark Stephenson, Wendy Priddy. Angie Offill, Polly Howe, Shelly Montoya, Jennifer Rittgers, Sam Nelson. Lance Wall, Jeff Woelk, and sponsor, Mr. Woelk.

EADS HIGH SCHOOL BAND



Top to bottom - left to right: Bond Director Mr. Seoy, Cindy Offill, Clint Robertson, Zane Liebl, Mark Nelson, Robyn Brown, Scott Laney, Heather Frederick, Travis Lessenden, Decky Rittgers, Mark Stephenson, Chris Lindholm, Melinda Walker, Paul Kelley, Jason Briggs, Ryan Wyatt, Broden Lone, Brent Barlow, Kim Kreutzer, Rachel Zimmermon, Tyler Frazee, Amber Liebl, Kristie Lorrew, Amy Bliss, Amy Beon, Koy Adamson, Kondi Free, Joe Musgrove, Rito Martinez, Brandi Weirich, Cori Montoyo, Stephonie Gifford, and Kim Jophet.



STUDENT COUNCIL AND KNOWLEDGE BOWL



Miss Lessenden (sponsor), Polly Howe (President), Billy Koehler (Vice-president), Meg Kreutzer (Secretary - Treasure), Amber Liebl (Reporter), and Danelle Beauvais (School board rep). Shelly Montoya, Mark Neslon, Wendy Fadness, Sam Nelson, Zane Liebl, Shelly Crawford, Heath Spody, Amy Morgan, Arrie Lane, Mark Stephenson, Stacey Reystread, Stacy Uhland, Doni Beauvois, Jeff Woelk, Sonny Emmert, Scott Laney, and Kim Jopher.



Miss Lessenden (sponsor), Kim Jopher, and Mrs. Wall (sponsor). Mark Nelson, Mark Stephenson, Wendy Priddy, Meg Kreutzer and Zane Liebl. Back row: Shelly Montoya, Jennifer Ritgers, Sam Nelson, Arran Hope, Matt Trosper.

CITIZEN OF THE MONTH



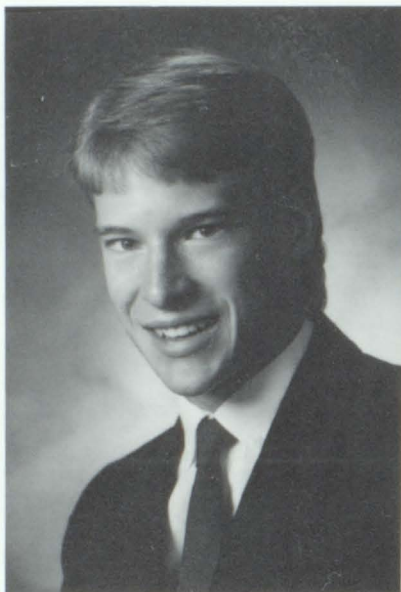
SEPTEMBER - Showna Graham



OCTOBER - Tyler Frazee



NOVEMBER - Duff Liebl



DECEMBER - Jeff Woelk



JANUARY - Wendy Priddy



FEBRUARY - Jennifer Rittgers



MARCH - Meg Kreutzer



APRIL - Amy Morgan



MAY - Sharon Crow

AWARDS NIGHT

HONORS EXCELLENCE IN ACADEMICS



Miss Less, with the assistance of Stuco President Polly Howe, presents our awards.

Awards night is held in honor of those students achieving academic excellence. Class and organization awards are presented as well as many scholarships to seniors planning to attend college. Any time a student is presented on an award, he or she should be proud of the outstanding accomplishments he or she has achieved. Awards night is a way of saying, "We are proud of what you have done and want to reward you not only with a pin or a certificate but with public recognition as well." E.H.S. should be proud to have so many fine academic students.



Mrs. Wall and Miss Less present the Knowledge Bowl awards to an outstanding team!



Teacher of the Year
Miss Lisa Gray

AND CLUB PARTICIPATION

SPRING THEATRE . . .

PHANTOM of the SOAP OPERA JR. / SR. CLASS PLAY



Back row - Sharon Crow, Sracey Reysreed, Srocy Uhland, Jeff Woelk, Chris Srowell. Middle - Lonnette Borlow, Billy Koehler, Polly Howe, Mark Stephenson, Shelly Montoya, Angie Offill, Mike Hines, Shelly Crawford, (behind) Showno Graham, Jomi Liebl. Front - Heath Spady and Arran Hope.

CAST

Showno Graham	Regina Brooks
Jeff Woelk	Der. Wright
Mike Hines	Quentin Harris
Heath Spady	Addison Meriwether
Billy Koehler	Theodore Osborne
Polly Howe	Daphne Davis
Arron Hope	Teddy
Angie Offill	Lily Ponds
Chris Srowell	Noah Caine
Sharon Crow	Emily
Sracey Uhland	Harlan Gaspar
Sracey Reysreed	Der. Eve Porter
Mark Stephenson	Sam
Lonnette Borlow	Millicent
Shelly Montoya	Cameroperson
Shelly Crawford	Newspaper reporter
Jomi Liebl	Blythe Evans
Mark Stephenson	The Phantom



Directed by Koren Templeton and Lisa Gray

. . . ENTERTAINS

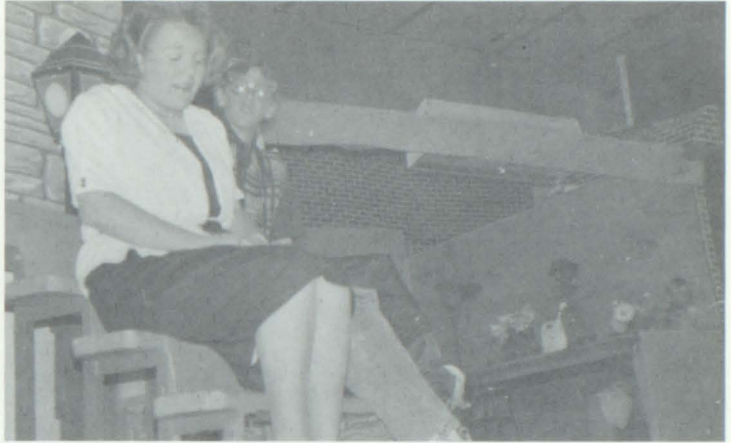
LITTLE SHOP HORRORS



The entire company of "Little Shop" sings Downtown - Skid Row.



The do wop girls sing their way into your hearts. Niki, Cindy, Sanna, Glenna, Robyn, and Heather.



"Suddenly Seymour, is standing beside me," sings Audrey (Kim Jopher) to Seymour (Scott Loney).

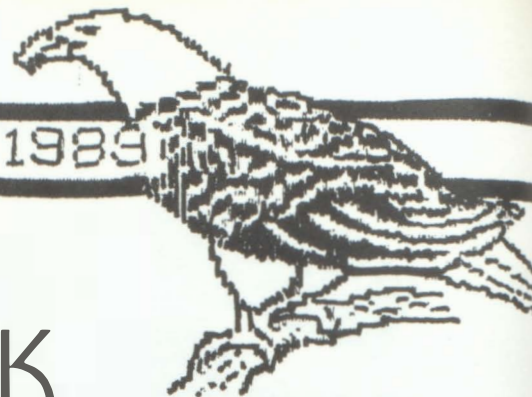
THE CAST (in order of appearance)

A voice not unlike God's	Chris Lindholm
Chiffon	Robyn Brown
Crystal	Heather Frederick
Ronnette	Cindy Offill
Roxie	Glenna Borlow
Jasmine	Niki Rybacki
Shurrell	Sanna Loiukonen
Mr. Mushnik	Sonny Emmert
Audrey	Kim Jopher
Seymour	Scott Loney
Cleaning Lady	Heather Frederick
Bag lady	Becky Rittgers
Wino #1	Paul Kelley
Wino #2	Joe Musgrove
Bum #1	Chris Stowell
Bum #2	Chris Lindholm
Well dressed man/customer	Donny Brown
Chong Do-Doo	Joe Musgrove
Orin Scrivello, DDS	Chris Lindholm
Patient	Paul Kelley
Customer	Keri Free
Mr. Bernstein	Joe Musgrove
Mrs. Luce	Niki Rybacki
Skip Snip	Donny Brown
Mr. Mortin	Donny Brown
Audrey II	Chris Stowell

Directed by Mr. Bob Seay



"Worch him suck up thot gas, oh my gosh!!!!"



YEARBOOK AND JOURNALISM MAKE HEADLINES AND . . .



Front row - Jamie Solisbury, J.D. Johnson, Chris Stowell, Nikki Hopkins. Second row - Donelle Beauvois, Meg Kreutzer, Joonie Rehm, Cori Wroblewski. Third row - Jomi Liebl, Lonnette Borlow, Angie Offill. Fourth row - Doni Beauvois, Terry Arnold, Heath Spody

. . . SHOCK THE NEWS WORLD!

FELLOWSHIP OF CHRISTIAN ATHLETES



Led rodeo church services

FCA Purpose

"To present to athletes and coaches, and all whom they influence, the challenge and adventure of receiving Jesus Christ as Savior and Lord serving Him in their relationships and in the fellowship of the church."



Shelly Montoya
Colorado FCA Girl
Athlete of the Year



Thoughtful discussions.



Attend college football games & rallies



Designed and paid for by Eads Fellowship of Christian Athletes. (Non school group)



Mini conferences of the Academy





Prom Royalty l. to r. Stacy Uhland, (King), Shelly Manroya (Queen), Heath Spady, Sharon Crow, Lance Wall and Jami Liebl.



Hmmm. What are we doing?



Do I smell food?



The parents!!! Wishing they were younger.





When I'm With You

April 15, 1989
9:00 p.m. - 12:00 a.m.





Memories

Tonight a curtain closes,
And we take a final bow,
To the four years we have spent
Which are slowly ending now.
But let time stop this evening,
For just an hour or two
As we recall the memories
That seem, right now, too few.
And gathered all together,
We will not say "goodbye"
For thoughts that will prevail
With us, of you, will never die.



Poem To The Seniors

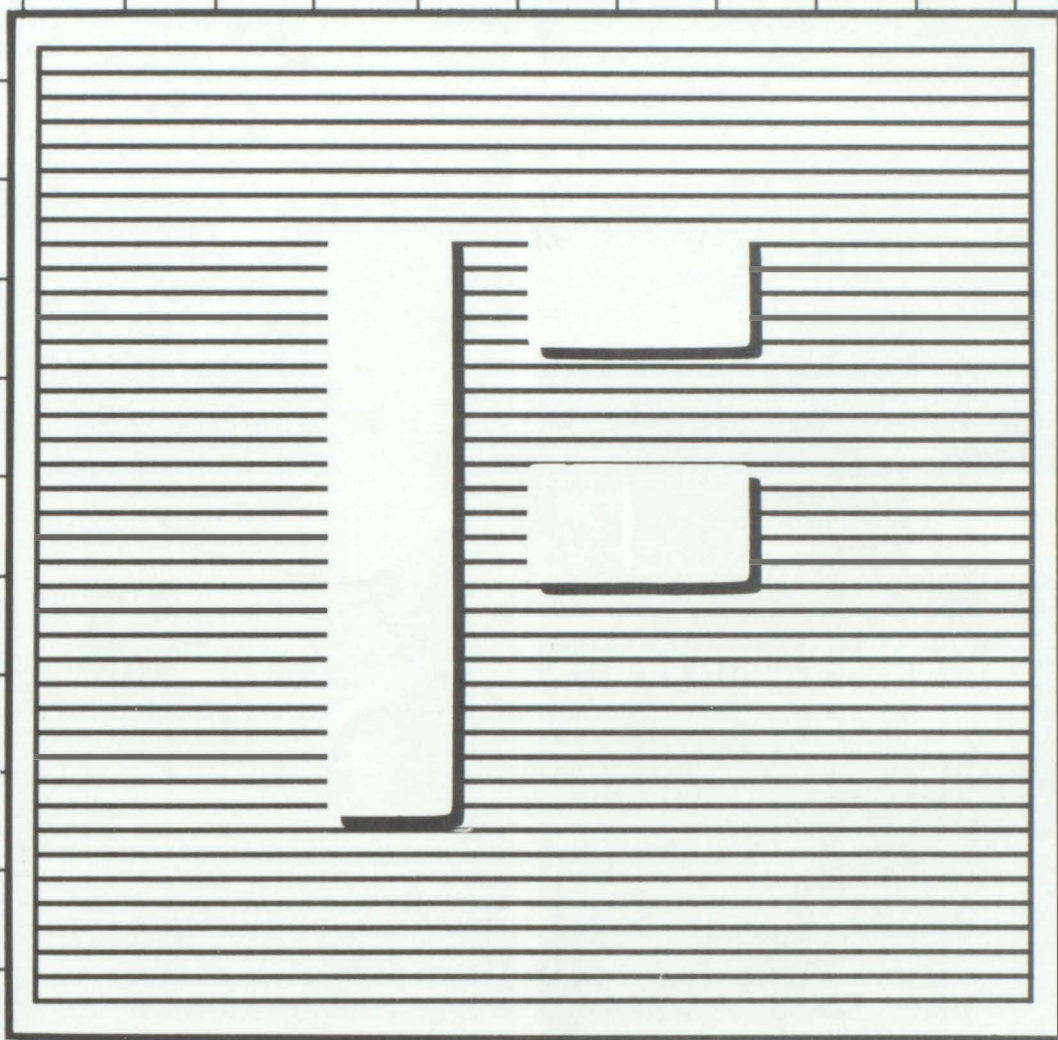
On winged feet the four years pass
And now we honor our Senior class.
Beyond these walls, this town, this state
A whole new world now lies in wait.
You've much to learn, we're often told
Wisdom to gain before you're old
But tonight-before you turn and go
Your separate ways, as well we know,
Enjoy this place, these hours, this school
In memory they'll return to you.



When I'm With You



Faculty &
Administration



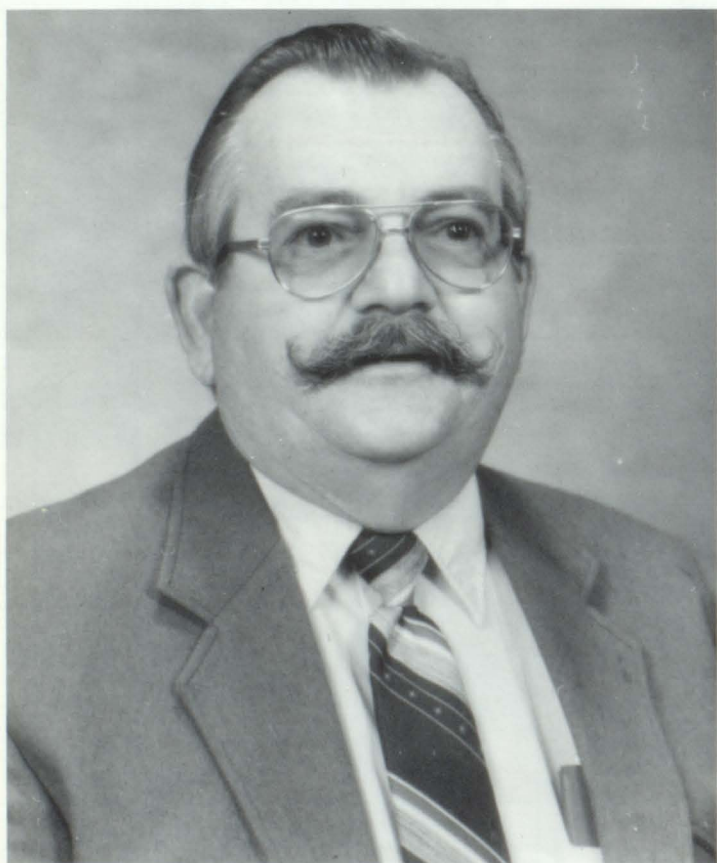
ADMINISTRATION



MAX BRIDGEMAN
Superintendent



PAUL STRADLEY
High School Principal



BUD WISER
Elementary Principal

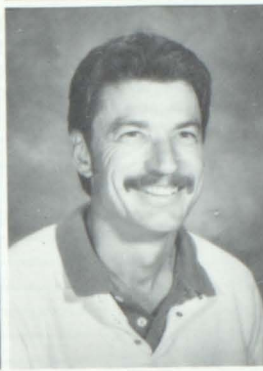


FLORRIS OSWALD
Superintendent Secretary

ELEMENTARY FACULTY



David Adamson
5th grade
Judy Beon
8th grade
Verle Beon
7th grade
Myrna Bishop
Kindergarten



Joner Gifford
Teacher Aide
Lorry Gifford
Elem. PE
Lone Gooden
6th grade
Bonnie Lessenden
School Nurse



Lindo Offill
Teacher Aide
Carol Spady
1st grade
Mary Speights
Resource Room
Valerie Stephenson
Secretary



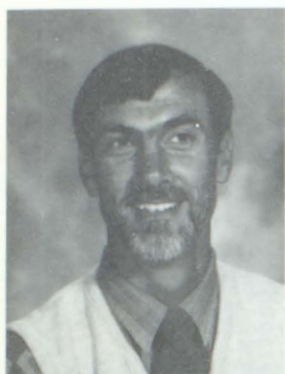
Brendo Stoker
4th grade
Karen Templeton 2nd grade
Not pictured
Deborah Gooden
3rd grade
Karen Worris
Elem. custodian

Not pictured

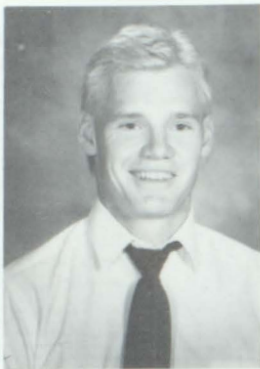
Roseanne
Laukonen

Ch.I Remedial
Reading

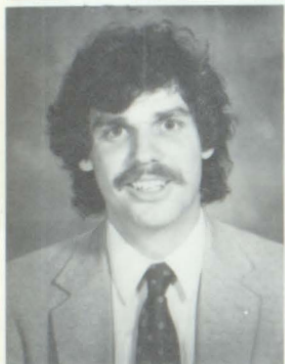
HIGH SCHOOL FACULTY



Joil Crawford
Admin. Asst. & Speech,
Driver Ed
Jacob Diel
Science
Lisa Gray
English
Not pictured
Joe Harbert



Doris Lessenden
Counselor
Gory Monter
History
Patti Pearl
Library
Not pictured
Lorraine Soffer
Special Ed.



Robert Seoy
Bond
Reonee Wall
Moth
William Woelk
Business
Robert Woods
Biology, Moth

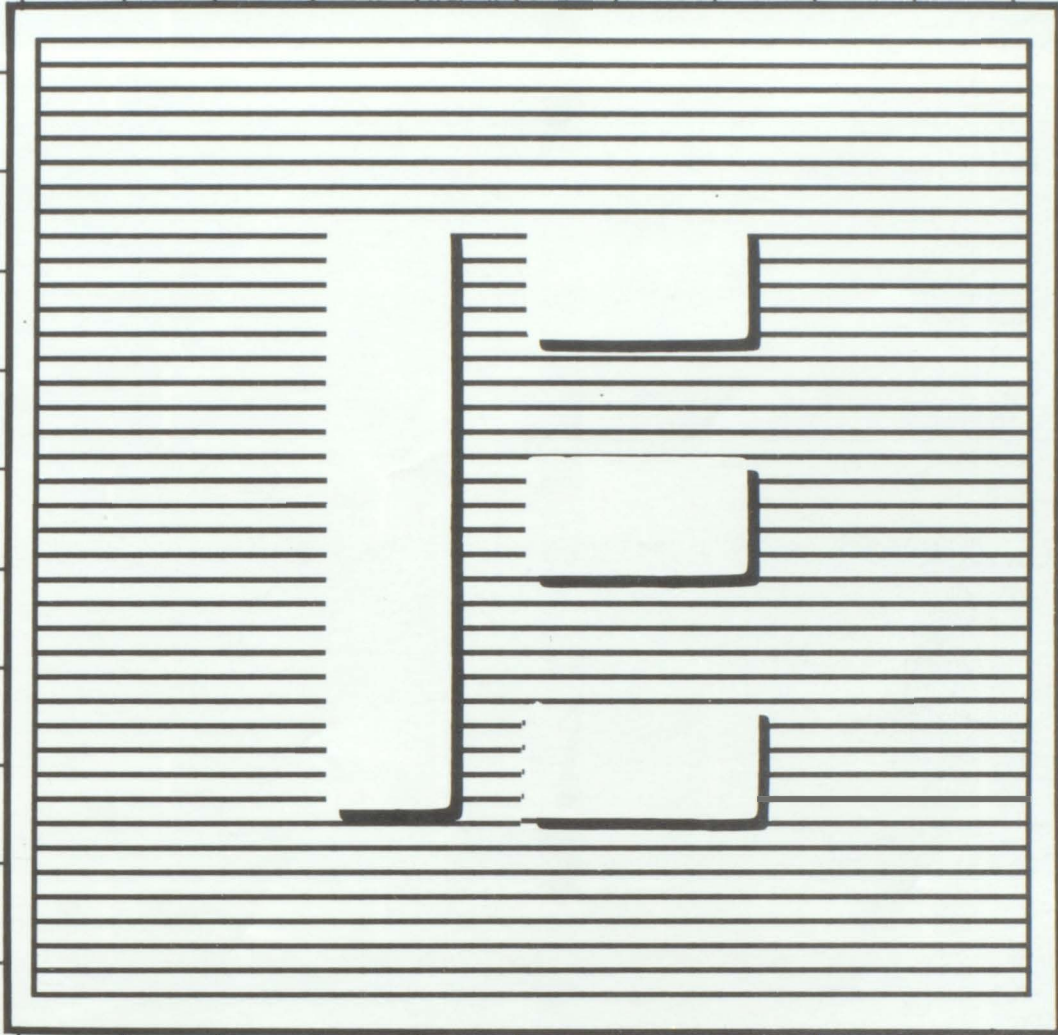


Alice Glover
Kitchen
Fran Lorrew
Kitchen
Dolores Rector
Kitchen
Not pictured
Phyllis Borlow
HS custodian



Berry Hillyer
Library
Rhonda Uhland
HS Secretary

Elementary



CLASS OF '93



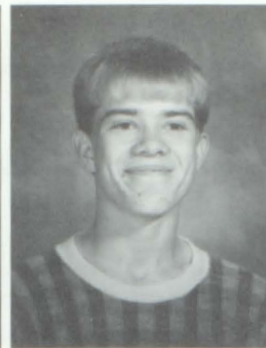
Brandon Arnold



Lindsey Daxter



Amy Beon



Jon Beneden



Brandon Briggs



Robyn Brown



Bradley Hopkins



Brod Howe



Ryan Howe



Keri Free



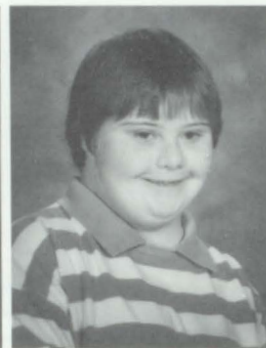
Doug Weber



Brondi Weirich



Melissa Pearl



Becky Pittman



Lawrence
Mendoza



Brad Morgan



Joe Musgrove



Rachel Zimmerman



Braden Lone



Kristi Lorrew

SEVENTH GRADE CLASS



Kay Adamson



Brent Borlow



Glenna Borlow



Krisit Boxter



Dirk Beneden



Jason Briggs



Karen Elkner



Kandi Free



Shoe Haskell



Ryon Hope



Tiffany Koehler



Kim Kreutzer



Sanna Loukonen



Rito Martinez



Rhondo McDaniel



Christina Montgomery



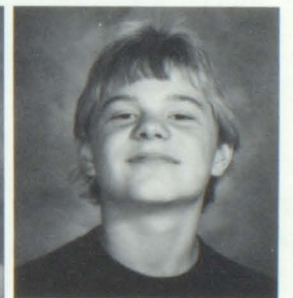
Cori Montoya



Rannie Ridgeway



Clint Robertson



Chad Rouse



Melinda Walker



Ryon Wyatt

SIXTH GRADE

Hollie
Borlow
Abbie
Brown
Donald
Canfield
Missy
Crockett
Donito
Driskell



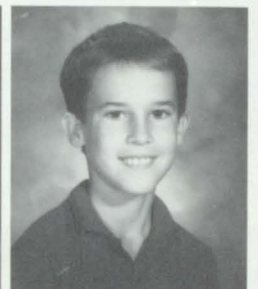
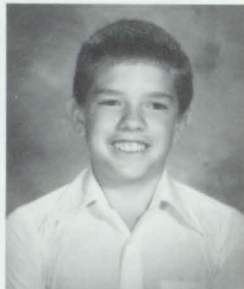
Angie
Fuller
Mistry
Fuller
Jennifer
Johnson
Denise
Loney
Brodley
Lorrew



Celena
Lessenden
Jeremiah
Liebl
Meagan
Liebl
Jodi
Michael
Gregory
Pearl



Colleen
Rehm
Leroy
Rittgers
Robert
Rittgers
Johnothon
Rouse
Jared
Stoker



Shelby
Weeks
Nathan
Weirich
Lindo
Wroblewski
Mondy
Wyatt



CLASS OF '95

FIFTH GRADE - CLASS OF '96



Mary
Adamson
Michael
Borlow
Raneë
Borlow
Lourie
Borton
Tracy
Brown



Rainy Ann
Colwell
Monti
Crawford
Kevin
Davis
Hollie
Frederick
Clark
Free



Crystal
Fuller
Jeremiah
Gaynor
Joshua
Gifford
Charity
Graham
Matt
Hoskell



Joson
Jophet
Joson
King
Kevin
Koch
Jade
Lyon
Paul
Mendoza



Brandon
Shade
Cozey
Sheridan
Marthew
Weber
Garret
Wilkinson

FOURTH GRADE



Brandon Adamson
Mary Adamson
J. Barron
H. Borrerson

Desiree Brown
Kare Cunningham
Rachel Davis
Wesley Eikner



Denise Florer
Matthew Haskell
H. Hesselschward
Kevin Kemper

Krystal Koch
Monte Lorrew
Hollie Lindholm
Aaron Loukonen



Dori Michael
Deo Weeks
Kylie Weirich

THIRD GRADE



Pere Arreguy
Sora Bowers
Candace Crain
Trinity Chapman



Robert Colwell
April Culbert
Helen Fischer
Jackie Kliesen



Sandy Lindholm
Serh McVicker
Travis Meeks
Tommi Musgrove



Jace Richards
Stephanie Taylor
Audrey Shade
Jennifer Walker



Audrey Watts

SECOND GRADE - CLASS OF 1999

Jarred
Adamson
Amanda
Borlow
Kelly
Borlow
Renee
Borton
Donell
Beeson



Adam Brown
Kori Brown
Mike Crain
Ian Davis
Lindsay
Dieterle



Shonell Eder
Jason Fuller
Gloria Gaynor
Zachary
Gifford
Brandon
Hoffman



Kerry Kemper
Robbie
Kliesen
Sommer Long
Ginger
Lorrew
Lacy Low



Tearle
Lessenden
Cosie Rehm
Tyrell
Richardson
Brandon
Walker
Samantha
Watts



HEY !!
LOOK US
OVER

Heidi
Weirich
Levi
Wilkison



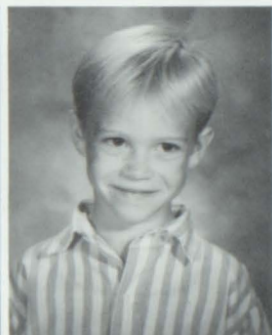
THE CLASS OF 2000



Kodie Boer
Matthew
Bontroiger-Boin
Amy Barton
Micheal Barton



Julie Boxter
Corly
Cunningham
Ky Davis
Heidi Fuller



Bobbi Graham
Kayna Kemper
Will Lewis
Justin McCloud



Brion Miller
Summer Osborne
Michael Seay
Donnelle
Sheridan



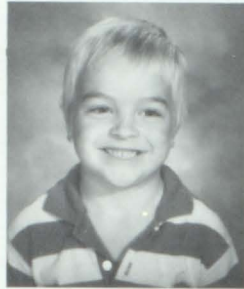
Timy Trosper
Amber Uhlend
Shurrell Vass
Stephanie
McVicker

KINDERGARTEN

Rex Borlow
Kyle
Bornett
Crystal
Borron
Bylie Jo
Beeson
Lauro
Beeson



Tyrel
Bliss
Cynthia
Bowers
Justin
Crain
Gory
Culbert
Leah
Fischer



Noah
Gifford
Tyrell
Hollen
Timothy
Howard
Ashlei
Hushkomp
Jennifer
James



Joshua
Kliesen
Leslie
Laird
Liberty
LeGrand
Marcus
Most
Robby
Miller



Annette
Rehm
Toyron
Richardson
Amber
Watson
Grady
Weeks
Michael
Zimmerman



CLASS OF 2001

HASWELL SCHOOL K - 6



Dianna Orrell
Teacher K-2
Deidro Davis
Lacy Davis
Kindergarten



Shelby Britten
Brondy Swope
Dustin Wyckoff
First Grade



Alison Davis
Jared Eikenberg
Karl Eikenberg
Craig Stavely
Second Grade



Jackie
Henderson
Teacher 3-6
Brandon
Reystead
Kevin Stavely
Third Grade
Erica Eikenberg Fourth Grade



Nathan Ramirez
Fourth Grade
Gino Gifford
Lourie Reystead Sixth Grade



Shanno Wyckoff
Sixth Grade
Lorry Gifford
Custodian -
Bus Driver
Delores
Eikenberg
Kirchen

JR. HIGH STUDENTS EXCEL IN SPORTS



Broden or his best.



The Leaders of the Pock.



Amy B. in action.



Way to cheer
Koren and Cori!



Koren Eikner

Kristi B. with the boll.



R & L LIQUOR

EADS, CO

81036

Raymond Crow & Lucille Crow

MANOR HOUSE RESTAURANT

438-9902

HWY'S 96 AND 287

EADS, CO 81036

"GOOD FOOD AND GOOD SERVICE"

BILL AND CAROLYN HOWARD

BARLOW & SONS, INC.
LIVESTOCK & FARMING
(719) 438-5394
CHIVINGTON, CO 81031

ELEMENTARY KIDS AT PLAY



ABSTRACTS

Kim Richards

Charla Crow

Mana & Secry/Tres.

Asist. Secry.

THE KIOWA COUNTY ABSTRACT COMPANY
INCORPORATED

Licensed and Bonded under the Laws of Colorado

PHONE 438-5811

EADS, COLORADO 81036



KIOWA
DRUGS
HEALTH MART

Eads, Colo. 81036
Phone- (719) 438-5394



TERRY'S BODY SHOP
Terry and Linda Eder

401 West 15th
Eads, Colorado 81036
438-5743

24 Hour Towing Service



Custom Slaughtering
LOCKER

LARRY FRAZEE RACING STABLES

BOX 133

EADS, CO 81036

(719) 438-5394

New-Repairs-Remodeling

Residential-Commercial

Sewer Cleaning

Water Heaters

Hot Water Heat



**PLUMBING
SERVICE**

P. O. Box 496

Eads, Colo. 81036

[719] 438-5343



RED WATER OILFIELD SERVICE

Rt. 1 Wiley, Colo. 81092

Water Service - Backhoe

Dozer - Winch Truck

TOM HASKELL
303-829-4377

C.E. HASKELL
303-829-4649



BARTLETT

AND

COMPANY

Phone (719) 438-5394
Eads, Colo.

GRAIN



LIEB'S LUMBER & HARDWARE

James and Pam Liebl

Eads, Colorado 81036

Lumber

108 E 13th

438-5426



REALTOR®

ROBERT C. MILLER AGENCY

REAL ESTATE - INSURANCE

PHONE
303-438-5629

ROBERT C. MILLER, BROKER
101 E 15TH
EADS, COLORADO 81036

(303) 438-5738

SHARON'S CUT AND STYLE

SHARON KOCH

301 E. 15TH
EADS, COLORADO 81036

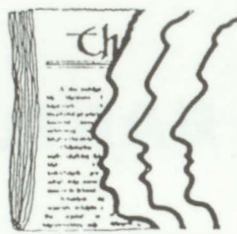
HARDY'S TRAVEL

East HWY. 287/96
Eads, Co. 81036

Gasoline
Diesel
Food
Souvenirs



P.O. Box 437
Phone (303) 438-5712



YOUR NEWSPAPER

**PEOPLE
SERVING
PEOPLE**

KIOWA



COUNTY

EADS, CO

PRESS



Janet's Flowers & Gifts

Bus: (719) 438-5886
Res: (719) 438-2278

1206 SOUTH MAINE
EADS, CO 81036

CABLE TV

AIR CONDITIONED

ROOM PHONES

TWILITE MOTEL ★ ★ ★
AND E-Z STORE ★

HWY 287 & 96

EADS, COLORADO 81036

For Reservations
PHONE: 719 438-5495

ED & LEA ZORN

**TASTEE TREAT
DRIVE INN**

Cyclones
Cones
Sandwiches
Soft Drinks
Mexican Days
Call by 12:15
for Pick-Up
Orders at 12:30

Phone 438-5365

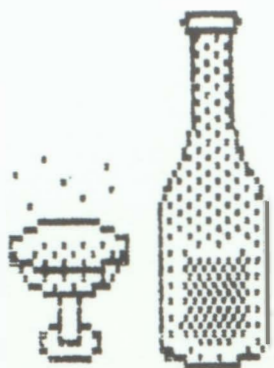


**EADS AUTO
SUPPLY**
404 E 15TH
EADS, CO. 81036
438-2227



**"ALL THE RIGHT
PARTS, IN ALL
THE RIGHT
PLACES!"**

JAN'S BAR



Phone 438-9984

EADS, Co. 81036

406 E. 15th St.

BUNNY'S

100 E. 15TH

HWY 96/287

OPEN 6AM-MIDNIGHT

DELI SPECIALS

LOTTERY TICKETS

FUEL

438-2267

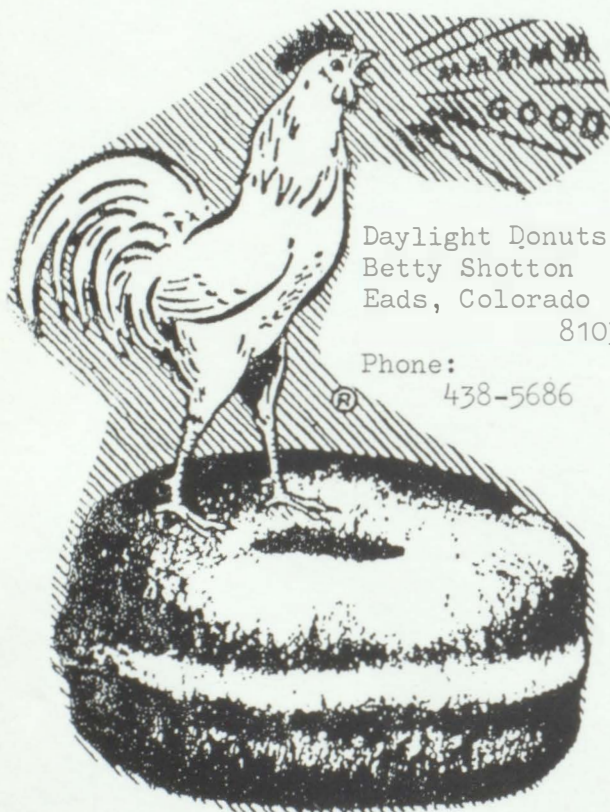


Deli-Grocery

BUNNY FREEMAN

OWNER

EADS-LAMAR-LAJUNTA



Daylight Donuts

Betty Shotton

Eads, Colorado

81036

Phone:

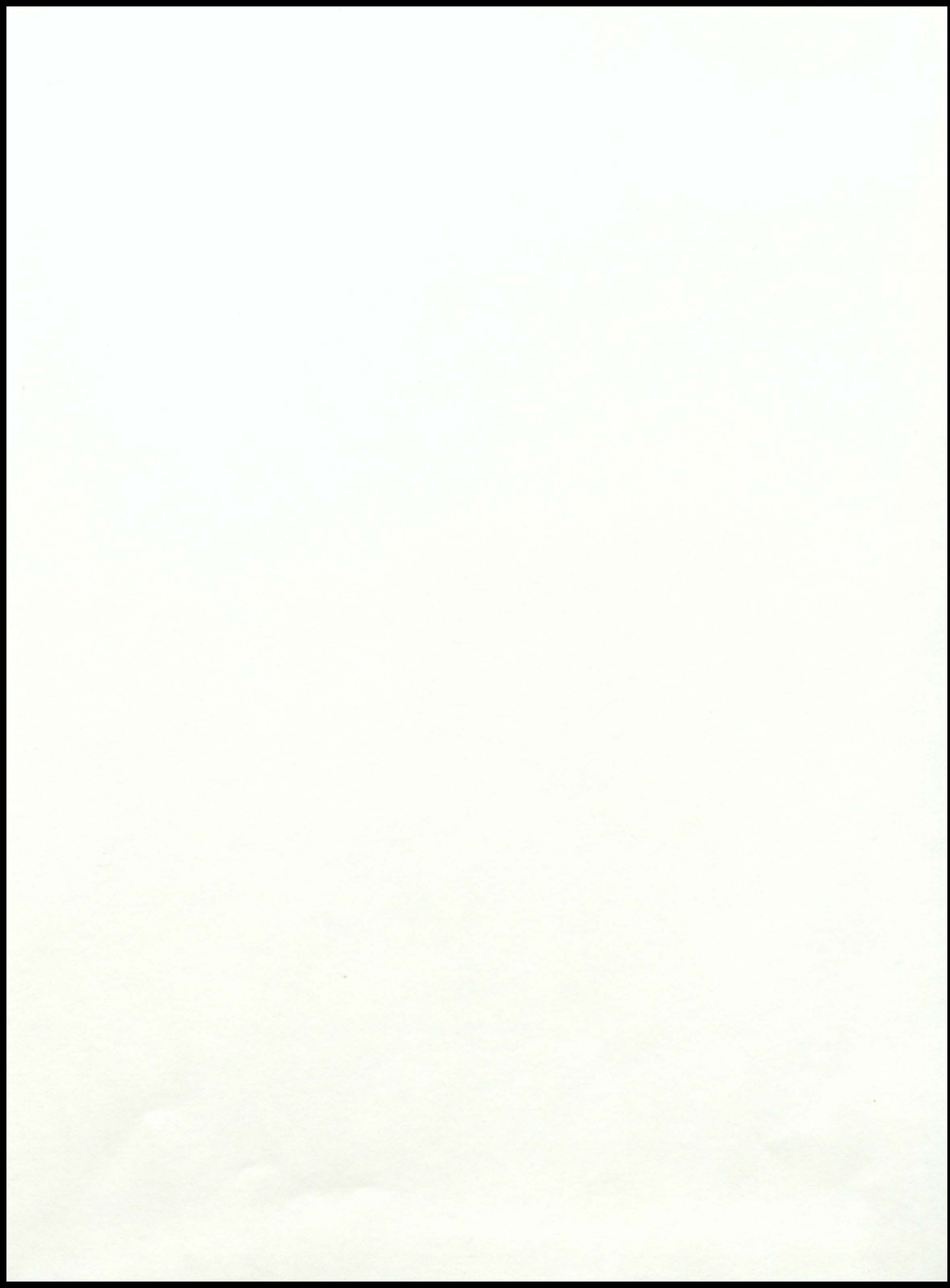
438-5686

BARLOW AERIAL SPRAYING

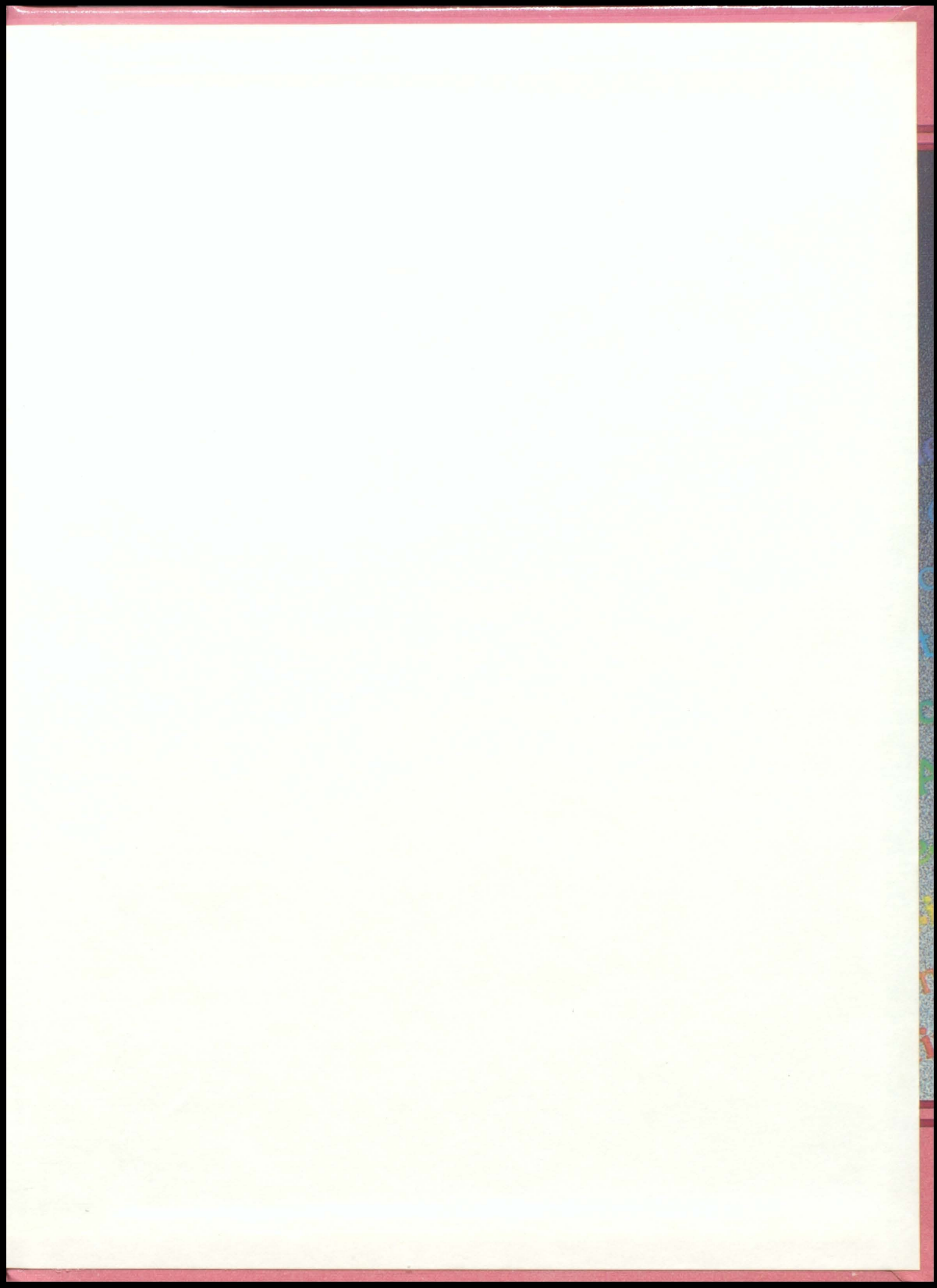
Kirk & Kim Barlow

438-2222









/di-'fin/vb [ME definen fr. MF & L; MF definir
 + finire to limit, end, fr. finis boundary, 'to
 mark the limits of b: to make distinct in c
 rmine the essential qualities or precise meanin
 pt of loyalty } b: to discover and set forth the
 CHARACTERIZE, DISTINGUISH ~ vi: to make
 nement } /-'fin-mənt/ n — de-finer /-'fī-nər
 en-dum /di-'fin-ē-'en-dəm/ n, pl de-fin-i-en-də
 ut. of definiendus gerundive of definire, } an
 i-ens /di-'fin-ē-,enz/ n, pl de-fin-i-en-tia /di-'fir
 a/ [L, prp. of definire]: an expression that